

# Switch

## Model ESP8T005080A Rev.A

0.5-8GHz Absorptive SP8T Solid State Switch



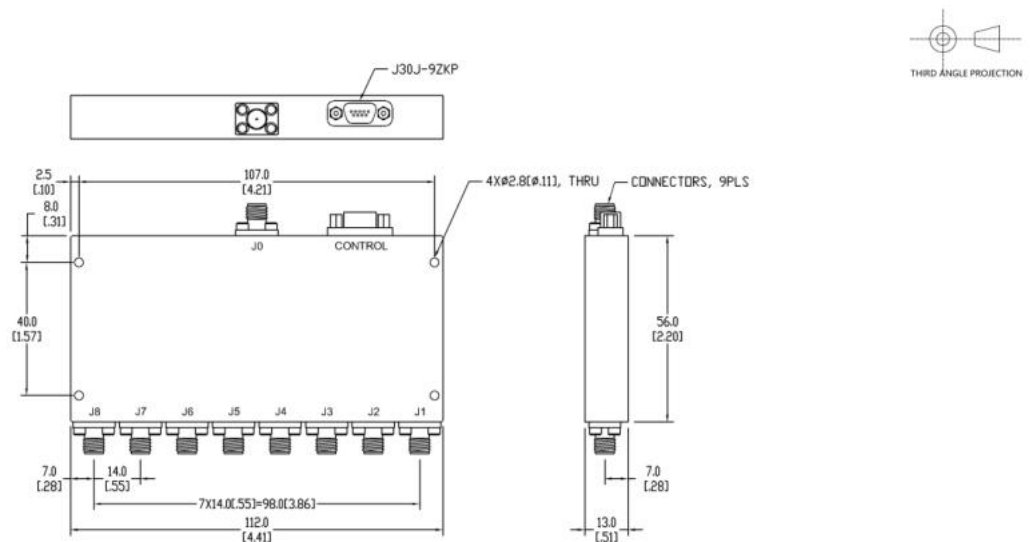
### Specifications

All specifications are subject to change without notice at any time

Frequency Range	GHz	0.5-8
VSWR	:1(Max.)	1.8
Insertion Loss	dB(Max.)	2
Amp./Pha. Consistency	(Max.)	±0.5dB / ±5Deg.
Isolation	dB(Min.)	70
Switching Time	ns(Max.)	250
Power	W(Max.)	1
Dimension & Weight <sup>1</sup>	56.0Lx112.0Wx13.0H (mm) / ≤200g	
Connector	RF: SMA[F]; Power & Control: J30J-9ZKP	
Power Supply	+5V±5%@ 400mA max.	
Control	Low level: "0" @ 0~+0.8V, High level: "1" @ +2.5~+5.0V (Internally pull up)	
Finishing	Alloy iridite, Per MIL-DTL-5541F	
Temperature	Operating: -55 ~ +85°C, Storage: -65 ~ +100°C	
Environmental	Optional: Per MIL-STD-202F (contact supplier for detail info.)	

Note: 1. Unless otherwise specified, Decimal tolerance: x.±1; .x±0.5; .xx±0.1

### Outline Drawing



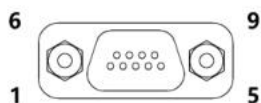
## Switch

### Model **ESP8T005080A Rev.A**

0.5-8GHz Absorptive SP8T Solid State Switch

---

### Interface Connector Pin Out



Pin	Definition	Pin	Definition
1	+5V	6	EN
2	N/C	7	N/C
3	C1	8	N/C
4	C2	9	GND
5	C3		

### Truth table

EN	C3	C2	C1	Channel
1	1	1	1	J1
1	1	1	0	J2
1	1	0	1	J3
1	1	0	0	J4
1	0	1	1	J5
1	0	1	0	J6
1	0	0	1	J7
1	0	0	0	J8
0	/	/	/	All turn off

# Switch

## Model ESP8T005080A Rev.A

0.5-8GHz Absorptive SP8T Solid State Switch

### Typical Graph

Typical test environment: 25°C and 60%RH

