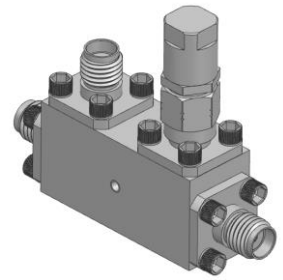


Directional Coupler

Model D30N400670 Rev.A

40-67GHz 30dB Directional Coupler, Coaxial connector



Specifications

All specifications are subject to change without notice at any time

Frequency Range	GHz	40-50	50-67
Main Line VSWR	:1 (Max.)	1.8	1.9
Coupling VSWR	:1 (Max.)	1.8	1.9
Insertion Loss ¹	dB(Max.)	1.5	2
Coupling	dB(Max.)	30±1.1	30±1.1
Flatness	dB(Max.)	±1.1	±1.1
Directivity	dB(Min.)	8	7
Power ²	W(Max.)	CW: 12; Peak: 1000	
Weight	g(Max.)	45	Dimension ³ mm (LxWxH) 31.8x12.7x15.9
Interface	Main line: 1.85mm [F], Coup.: 1.85mm [F]; Stainless steel connector, Per IEC 61169		
Finishing	Nickel plating, Per QQ-N-290		
Temperature	Operating: -55~+85°C; Storage: -55~+100°C		
Environmental	Optional: Per MIL-STD-202F (contact supplier for detail info.)		
Eng. Customized	N/A		

- Note:
1. Theoretical coupling loss included
 2. VSWR ≤ 1.2 required for CW
 3. Unless otherwise specified, Decimal tolerance: x.±1; .x±0.5; .xx±0.1

Outline Drawing

