

# Directional Coupler

## Model D16N010500 Rev.A

1-50GHz 16dB Directional Coupler, Coaxial connector



### Specifications

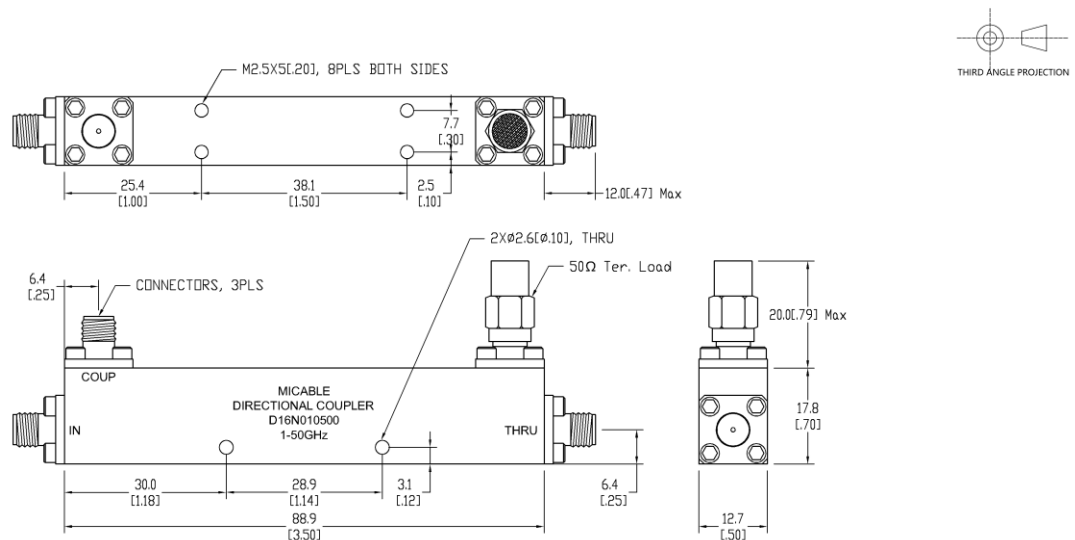
All specifications are subject to change without notice at any time

Frequency Range	GHz	1-18	18-40	40-50
Main Line VSWR	:1 (Max.)	1.6	1.7	1.8
Coupling VSWR	:1 (Max.)	1.6	1.7	1.8
Insertion Loss <sup>1</sup>	dB(Max.)	1.5	2.3	2.6
Coupling	dB(Max.)	16±0.8	16±0.8	16±0.8
Flatness	dB(Max.)	±1.2	±1.2	±1.2
Directivity	dB(Min.)	14	10	8
Power <sup>2</sup>	W(Max.)	CW: 20; Peak: 1000		
Weight	g(Max.)	75	Dimension <sup>3</sup> mm (LxWxH)	88.9x12.7x17.8
Interface	Main line: 2.4mm [F], Coup.: 2.4mm [F]; Stainless steel connector, Per IEC 61169			
Finishing	Nickel plating, Per QQ-N-290			
Temperature	Operating: -55~+85°C; Storage: -55~+100°C			
Environmental	Optional: Per MIL-STD-202F (contact supplier for detail info.)			
Eng. Customized	N/A			

Note:

- Theoretical 0.11dB Included
- VSWR ≤ 1.2 required for CW
- Unless otherwise specified, Decimal tolerance: x.±1; .x±0.5; .xx±0.1

### Outline Drawing



# Directional Coupler

## Model D16N010500 Rev.A

1-50GHz 16dB Directional Coupler, Coaxial connector

### Typical Graph

Typical test environment: 25°C and 60%RH

