

50Ω Adapter 2.92mm Female - 2.92mm Female 4-Hole Flange

Part Number: 292-FFF



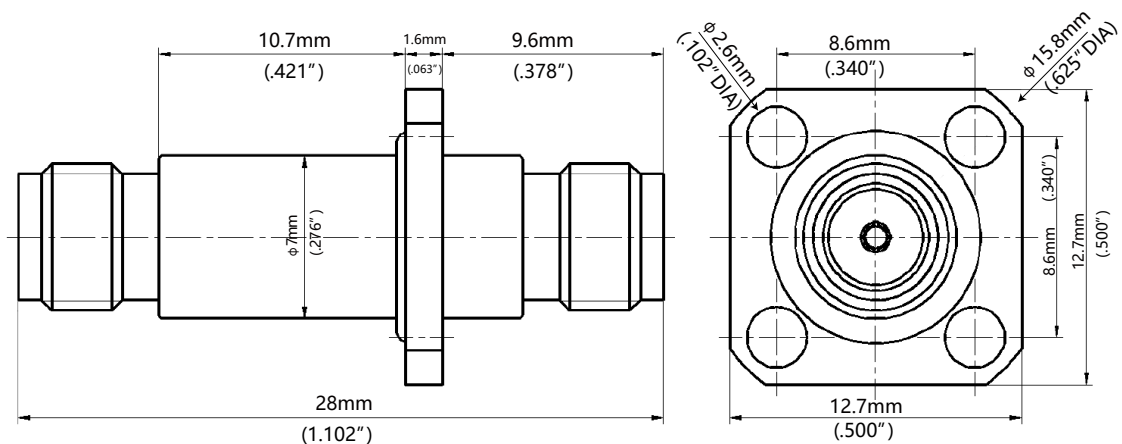
Specifications

Electrical Specifications at 25° C, all specifications are subject to change without notice at any time. Rev. B

Frequency Range	DC-40GHz
VSWR (Max.)	1.15:1
Insertion Loss (Max.)	0.3dB
Durability (Min.)	1000 cycles
Insulation Resistance (Min.)	5000 MΩ
Dielectric Withstanding Voltage (Min.)	750 Vrms
Operating Temperature	-65° C~+165° C
Outer Conductor	Stainless Steel Passivated
Center Conductor	Gold-Plated Beryllium Copper
Dielectric	PEI

Outline Drawing

Note: Unless otherwise specified, Decimal Note tolerance: ±0.2



50Ω Adapter 2.92mm Female - 2.92mm Female 4-Hole Flange

Part Number: 292-FFF

Electrical Specifications at 25° C, all specifications are subject to change without notice at any time. Rev. B

Typical Graph

