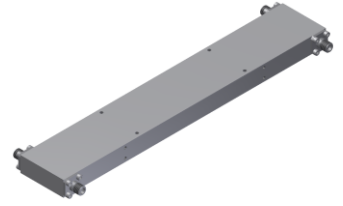


4-Port 90° Hybrid Coupler

Model QN005080 Rev.A

0.5-8GHz 4-Port 3dB 90°Hybrid, Coaxial connector



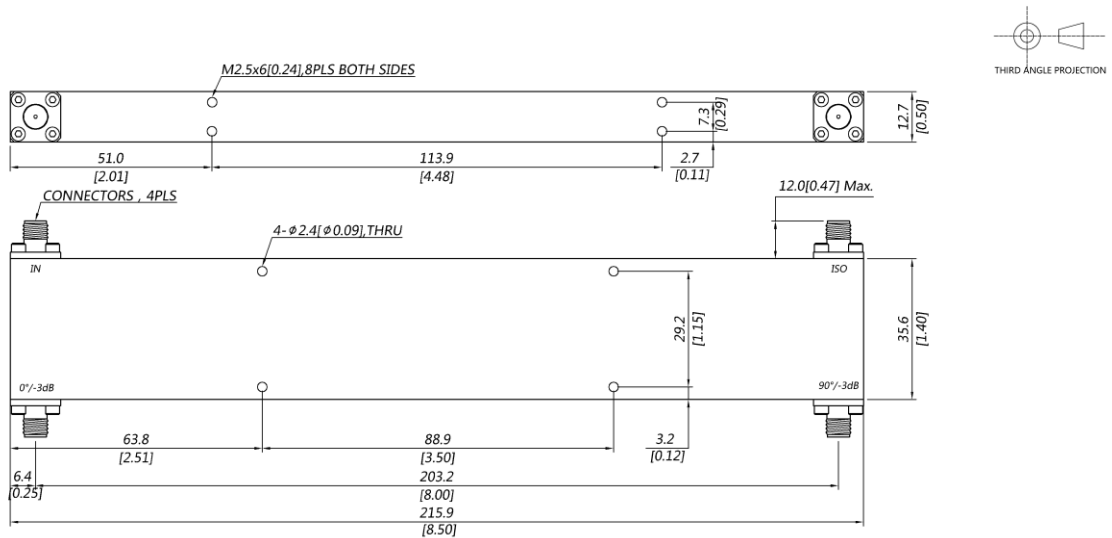
Specifications

All specifications are subject to change without notice at any time

Frequency Range	GHz	0.5-8	
Nom. Phase	Deg. (Typ.)	90	
Ports VSWR	:1 (Max.)	1.4	
Insertion Loss ¹	dB(Max.)	1.6	
Amp. Unbalance	dB(Max.)	±0.7	
Phase Unbalance	Deg. (Max.)	±5	
Isolation	dB(Min.)	19	
Power ²	W(Max.)	CW: 30; Peak: 3000	
Weight	g(Max.)	285	Dimension ³ mm (LxWxH) 35.6x215.9x12.7
Interface	Stainless steel connector; Input: SMA [F], Output: SMA [F]		
Finishing	Alloy iridite		
Temperature	Operating: -55~+85°C; Storage: -55~+100°C		
Environmental	Per MIL-STD-202F, Method 107D, 204D, 213B (optional, contact supplier for detail info.)		
Eng. Customized	N/A		

- Note:
- Above Theoretical Loss 3dB
 - VSWR ≤ 1.2 required for CW
 - Unless otherwise specified, Decimal tolerance: x.±1; .x±0.5; .xx±0.1

Outline Drawing



4-Port 90° Hybrid Coupler

Model QN005080 Rev.A

0.5-8GHz 4-Port 3dB 90°Hybrid, Coaxial connector

Typical Graph

Typical test temperature @25°C

