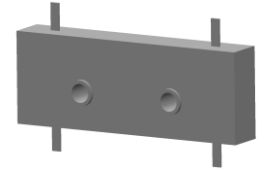


# 4-Port 90° Hybrid Coupler

## Model Q8T110170 Rev.A

1.1-1.7GHz 4-Port 3dB 90° Hybrid, Drop-In



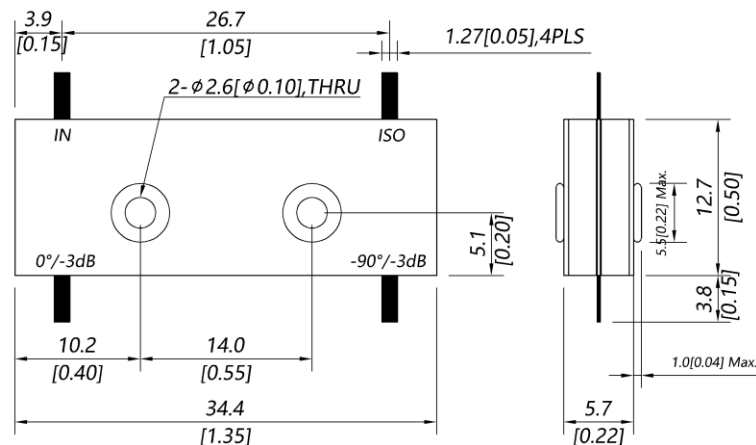
### Specifications

All specifications are subject to change without notice at any time

Frequency Range	GHz	1.1-1.7	
Nom. Phase	Deg. (Typ.)	90	
Ports VSWR	:1 (Max.)	1.25	
Insertion Loss <sup>1</sup>	dB(Max.)	0.2	
Amp. Unbalance	dB(Max.)	±0.4	
Phase Unbalance	Deg. (Max.)	±3	
Isolation	dB(Min.)	20	
Power <sup>2</sup>	W(Max.)	CW: 400	
Weight	g(Max.)	15	Dimension <sup>3</sup> mm (LxWxH) 12.7x34.4x5.7
Interface	Drop-In		
Finishing	Alloy iridite		
Temperature	Operating: -40~+70°C; Storage: -55~+85°C		
Environmental	N/A		
Eng. Customized	N/A		

- Note:
- Above theoretical 3dB and amplitude unbalance
  - VSWR ≤ 1.2 required for CW
  - Unless otherwise specified, Decimal tolerance: x.±1; .x±0.5; .xx±0.25

### Outline Drawing



# 4-Port 90° Hybrid Coupler

## Model Q8T110170 Rev.A

1.1-1.7GHz 4-Port 3dB 90° Hybrid, Drop-In

### Typical Graph

Typical test temperature @25°C

