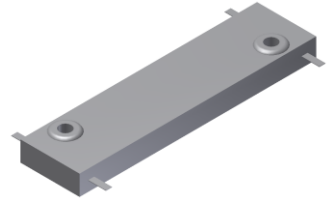


# 4-Port 90° Hybrid Coupler

## Model Q8T050100 Rev.A

0.5-1GHz 4-Port 3dB 90° Hybrid, Drop-In



### Specifications

All specifications are subject to change without notice at any time

Frequency Range	GHz	0.5-1	
Nom. Phase	Deg. (Typ.)	90	
Ports VSWR	:1 (Max.)	1.25	
Insertion Loss <sup>1</sup>	dB(Max.)	0.25	
Amp. Unbalance	dB(Max.)	±0.55	
Phase Unbalance	Deg. (Max.)	±5	
Isolation	dB(Min.)	20	
Power <sup>2</sup>	W(Max.)	CW: 400	
Weight	g(Max.)	20	Dimension <sup>3</sup> mm (LxWxH) 12.7x50.8x5.5
Interface	Drop-In		
Finishing	Alloy iridite		
Temperature	Operating: -40~+70°C; Storage: -55~+85°C		
Environmental	N/A		
Eng. Customized	N/A		

- Note:
- Above theoretical 3dB and amplitude unbalance
  - VSWR ≤ 1.2 required for CW
  - Unless otherwise specified, Decimal tolerance: x.±1; .x±0.5; .xx±0.25

### Outline Drawing

