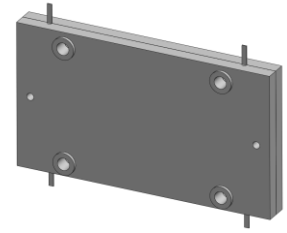


4-Port 90° Hybrid Coupler

Model Q8T035140 Rev.A

0.35-1.4GHz 4-Port 3dB 90° Hybrid, Drop-In



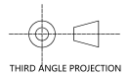
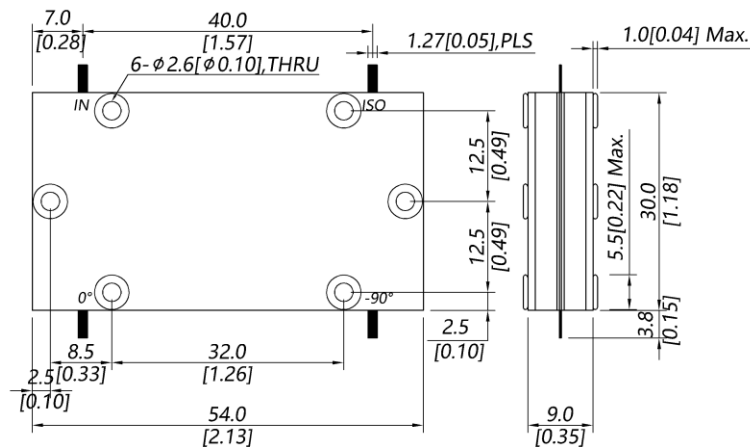
Specifications

All specifications are subject to change without notice at any time

| | | | |
|-----------------------------|--|----------|---|
| Frequency Range | GHz | 0.35-1.4 | |
| Nom. Phase | Deg. (Typ.) | 90 | |
| Ports VSWR | :1 (Max.) | 1.4 | |
| Insertion Loss ¹ | dB(Max.) | 0.55 | |
| Amp. Unbalance | dB(Max.) | ±0.7 | |
| Phase Unbalance | Deg. (Max.) | ±5 | |
| Isolation | dB(Min.) | 16 | |
| Power ² | W(Max.) | CW: 400 | |
| Weight | g(Max.) | 40 | Dimension ³ mm (LxWxH) 30.0x54.0x9.0 |
| Interface | Drop-In | | |
| Finishing | Alloy iridite | | |
| Temperature | Operating: -40~+70°C; Storage: -55~+85°C | | |
| Environmental | N/A | | |
| Eng. Customized | N/A | | |

- Note:
- Above theoretical 3dB and amplitude unbalance
 - VSWR ≤ 1.2 required for CW
 - Unless otherwise specified, Decimal tolerance: x±1; .x±0.5; .xx±0.25

Outline Drawing



4-Port 90° Hybrid Coupler

Model Q8T035140 Rev.A

0.35-1.4GHz 4-Port 3dB 90° Hybrid, Drop-In

Typical Graph

Typical test temperature @25°C

