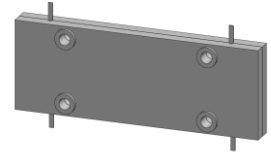


4-Port 90° Hybrid Coupler

Model Q5T015025 Rev.A

0.15-0.25GHz 4-Port 3dB 90° Hybrid, Drop-In



Specifications

All specifications are subject to change without notice at any time

Frequency Range	GHz	0.15-0.25	
Nom. Phase	Deg. (Typ.)	90	
Ports VSWR	:1 (Max.)	1.3	
Insertion Loss ¹	dB(Max.)	0.25	
Amp. Unbalance	dB(Max.)	±0.75	
Phase Unbalance	Deg. (Max.)	±4	
Isolation	dB(Min.)	20	
Power ²	W(Max.)	CW: 250	
Weight	g(Max.)	15	Dimension ³ mm (LxWxH) 20.3x55.9x3.6
Interface	Drop-In		
Finishing	Alloy iridite		
Temperature	Operating: -40~+70°C; Storage: -55~+85°C		
Environmental	N/A		
Eng. Customized	N/A		

- Note:
- Above theoretical 3dB and amplitude unbalance
 - VSWR ≤ 1.2 required for CW
 - Unless otherwise specified, Decimal tolerance: x.±1; .x±0.5; .xx±0.25

Outline Drawing

