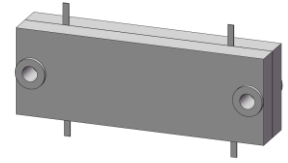


4-Port 90° Hybrid Coupler

Model Q2T200600 Rev.A

2-6GHz 4-Port 3dB 90° Hybrid, Drop-In



Specifications

All specifications are subject to change without notice at any time

Frequency Range	GHz	2-6	
Nom. Phase	Deg. (Typ.)	90	
Ports VSWR	:1 (Max.)	1.3	
Insertion Loss ¹	dB(Max.)	0.3	
Amp. Unbalance	dB(Max.)	±1	
Phase Unbalance	Deg. (Max.)	±5	
Isolation	dB(Min.)	18	
Power ²	W(Max.)	CW: 100	
Weight	g(Max.)	5	Dimension ³ mm (LxWxH) 6.4x33.0x4.7
Interface	Drop-In		
Finishing	Alloy iridite		
Temperature	Operating: -40~+70°C; Storage: -55~+85°C		
Environmental	N/A		
Eng. Customized	N/A		

- Note:
- Above theoretical 3dB and amplitude unbalance
 - VSWR ≤ 1.2 required for CW
 - Unless otherwise specified, Decimal tolerance: x.±1; .x±0.5; .xx±0.25

Outline Drawing

