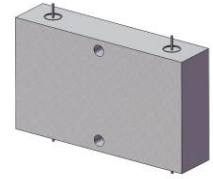


# 4-Port 90° Hybrid Coupler

## Model Q1T0218 Rev.A

2-18GHz 4-Port 3dB 90° Hybrid, Drop-In



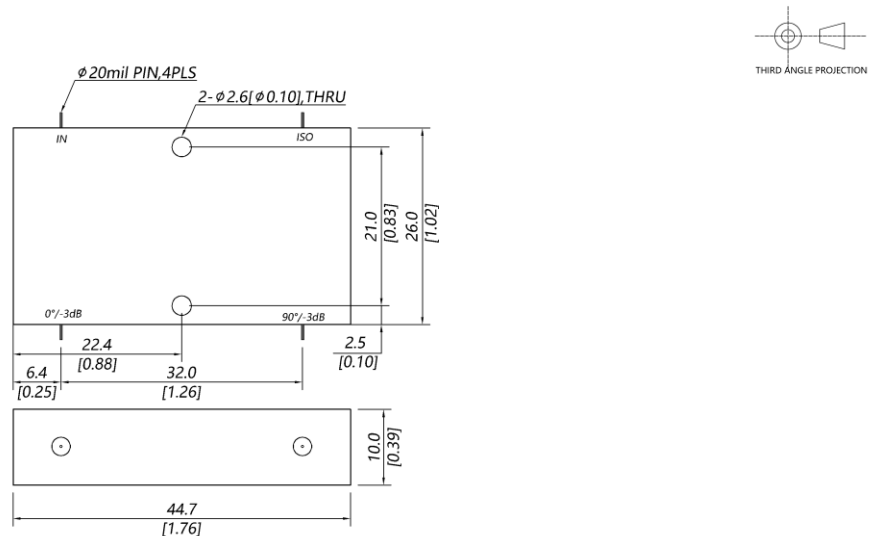
### Specifications

All specifications are subject to change without notice at any time

|                             |  |        |  |
|-----------------------------|--|--------|--|
| Frequency Range             | GHz                                      | 2-10   | 10-18  |
| Nom. Phase                  | Deg. (Typ.)                              | 90     | 90   |
| Ports VSWR                  | :1 (Max.)                                | 1.5    | 1.5  |
| Insertion Loss <sup>1</sup> | dB(Max.)                                 | 0.8    | 1  |
| Amp. Unbalance              | dB(Max.)                                 | ±0.8   | ±0.5   |
| Phase Unbalance             | Deg. (Max.)                              | ±7     | ±7   |
| Isolation                   | dB(Min.)                                 | 15     | 15   |
| Power <sup>2</sup>          | W(Max.)                                  | CW: 30 |  |
| Weight                      | g(Max.)                                  | 35     | Dimension <sup>3</sup> mm (LxWxH) 26.0x44.7x10.0 |
| Interface                   | Drop-In                                  |        |  |
| Finishing                   | Alloy iridite                            |        |  |
| Temperature                 | Operating: -40~+70°C; Storage: -55~+85°C |        |  |
| Environmental               | N/A                                      |        |  |
| Eng. Customized             | N/A                                      |        |  |

- Note:
- Above theoretical 3dB and amplitude unbalance
  - VSWR ≤ 1.2 required for CW
  - Unless otherwise specified, Decimal tolerance: x.±1; .x±0.5; .xx±0.25

### Outline Drawing



# 4-Port 90° Hybrid Coupler

## Model Q1T0218 Rev.A

2-18GHz 4-Port 3dB 90° Hybrid, Drop-In

### Typical Graph

Typical test temperature @25°C

