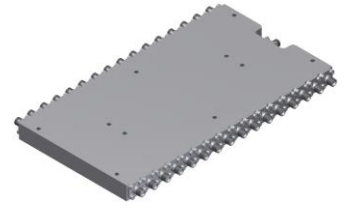


# Power Divider/Combiner

## Model P32N180670 Rev.A

18-67GHz 32-Way Power Divider/Combiner, Coaxial connector



### Specifications

All specifications are subject to change without notice at any time

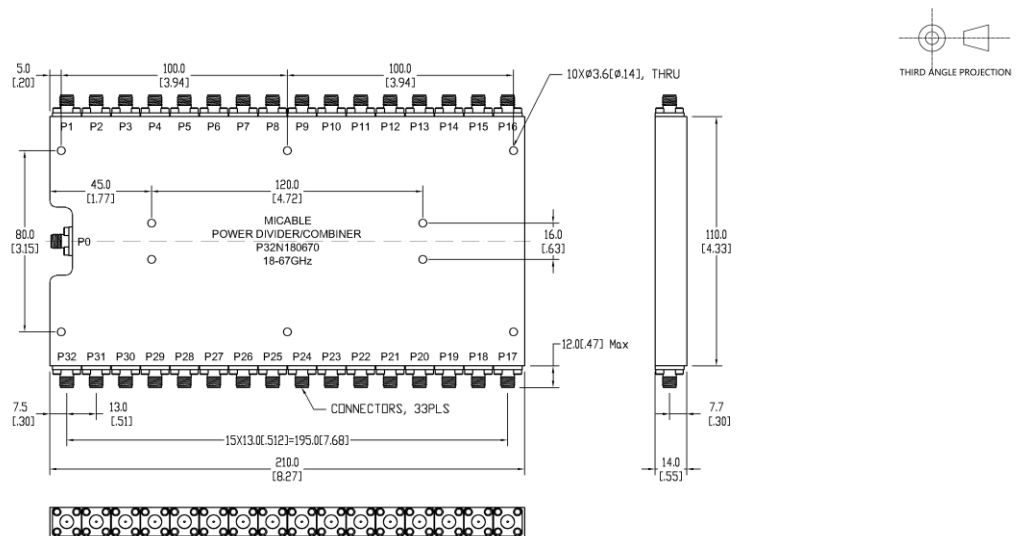
Frequency Range	GHz	18-40	40-50	50-67
Sum VSWR	:1 (Max.)	1.6	1.7	1.8
Distri. VSWR	:1 (Max.)	1.7	1.8	1.8
Insertion Loss <sup>1</sup>	dB(Max.)	5.5	6.8	9.4
Amp. Unbalance	dB(Max.)	±0.6	±0.7	±0.8
Phase Unbalance	Deg. (Max.)	±8	±10	±12
Isolation	dB(Min.)	18	18	18
Power <sup>2</sup>	W(Max.)	CW: FOR 12, REV 1; Peak: 1000		
Weight	g(Max.)	1000	Dimension <sup>3</sup> mm (LxWxH)	110.0x210.0x14.0
Interface	Sum: 1.85mm [F], Distri.: 1.85mm [F]; Stainless steel connector, Per IEC 61169			
Finishing	Alloy iridite, Per MIL-DTL-5541F			
Temperature	Operating: -55~+85°C; Storage: -55~+100°C			
Environmental	Optional: Per MIL-STD-202F (contact supplier for detail info.)			
Eng. Customized	N/A			

Note: 1. Above Theoretical Loss 15dB

2. VSWR ≤ 1.2 required for forward CW; Amp. & phase unbalance required for reversed input signals

3. Unless otherwise specified, Decimal tolerance: x.±1; .x±0.5; .xx±0.1

### Outline Drawing



# Power Divider/Combiner

## Model P32N180670 Rev.A

18-67GHz 32-Way Power Divider/Combiner, Coaxial connector

### Typical Graph

@Ambient Temperature

