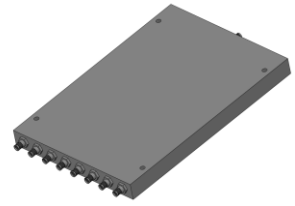


Power Divider

Model P08T00450600 Rev.A

0.45-6GHz 8-Way Power Divider, Coaxial connector



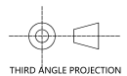
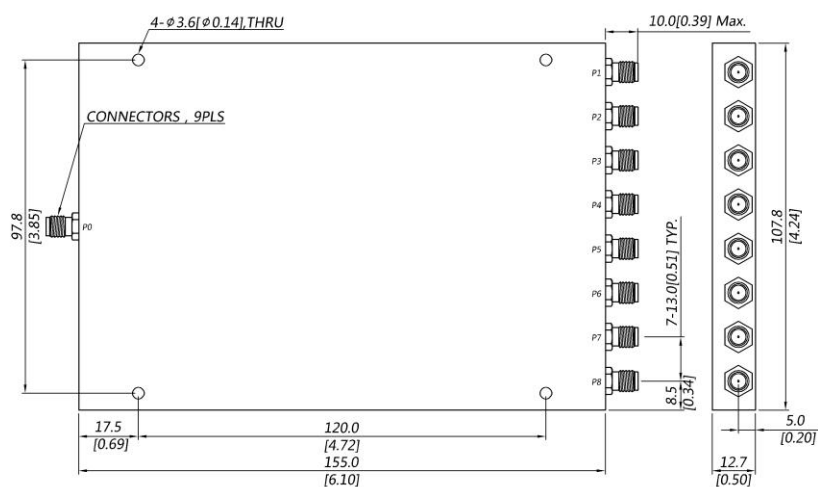
Specifications

All specifications are subject to change without notice at any time

Frequency Range	GHz	0.45-6	
Sum VSWR	:1 (Max.)	1.5	
Distri. VSWR	:1 (Max.)	1.4	
Insertion Loss ¹	dB(Max.)	2.2	
Amp. Unbalance	dB(Max.)	±0.5	
Phase Unbalance	Deg. (Max.)	±7	
Isolation	dB(Min.)	16	
Power ²	W(Max.)	CW: FOR 30, REV 1; Peak: 500	
Weight	g(Max.)	23	Dimension ³ mm (LxWxH) 155x107.8x12.7
Interface	Stainless steel connector; Sum: SMA [F], Distri.: SMA [F]		
Finishing	Alloy iridite		
Temperature	Operating: -40~+70°C; Storage: -55~+85°C		
Environmental	N/A		
Eng. Customized	N/A		

- Note:
- Above Theoretical Loss 9dB
 - VSWR ≤ 1.2 required for CW
 - Unless otherwise specified, Decimal tolerance: x.±1; .x±0.5; .xx±0.1

Outline Drawing



Power Divider

Model P08T00450600 Rev.A

0.45-6GHz 8-Way Power Divider, Coaxial connector

Typical Graph

Typical test temperature @25°C

