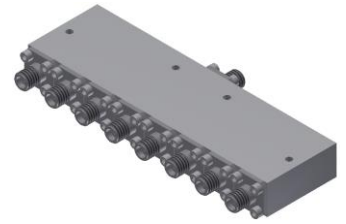


# Power Divider/Combiner

## Model P08N265500 Rev.A

26.5-50GHz 8-Way Power Divider/Combiner, Coaxial connector



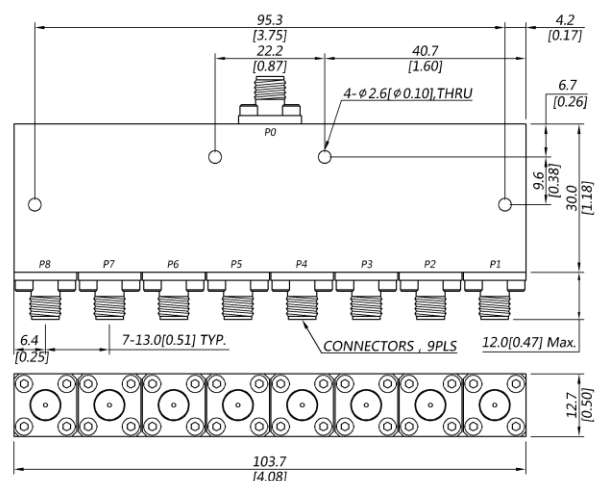
### Specifications

All specifications are subject to change without notice at any time

Frequency Range	GHz	26.5-40	40-50
Sum VSWR	:1 (Max.)	1.8	1.8
Distri. VSWR	:1 (Max.)	1.7	1.8
Insertion Loss <sup>1</sup>	dB(Max.)	3.2	3.8
Amp. Unbalance	dB(Max.)	±0.5	±0.7
Phase Unbalance	Deg. (Max.)	±8	±10
Isolation	dB(Min.)	16	16
Power <sup>2</sup>	W(Max.)	CW: FOR 20, REV 1; Peak: 1000	
Weight	g(Max.)	150	Dimension <sup>3</sup> mm (LxWxH) 30.0x103.7x12.7
Interface	Stainless steel connector; Sum: 2.4mm [F], Distri.: 2.4mm [F]		
Finishing	Alloy iridite		
Temperature	Operating: -55~+85°C; Storage: -55~+100°C		
Environmental	Per MIL-STD-202F, Method 107D, 204D, 213B (optional, contact supplier for detail info.)		
Eng. Customized	N/A		

- Note:
- Above Theoretical Loss 9dB
  - VSWR ≤ 1.2 required for forward CW; Amp. & phase unbalance required for reversed input signals
  - Unless otherwise specified, Decimal tolerance: x.±1; .x±0.5; .xx±0.1

### Outline Drawing



# Power Divider/Combiner

## Model P08N265500 Rev.A

26.5-50GHz 8-Way Power Divider/Combiner, Coaxial connector

### Typical Graph

Typical test temperature @25°C

