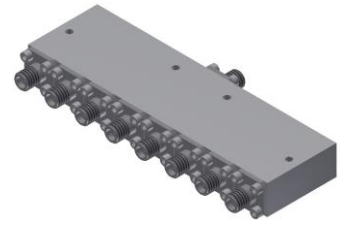


# Power Divider/Combiner

## Model P08N180670 Rev.A

18-67GHz 8-Way Power Divider/Combiner, Coaxial connector



### Specifications

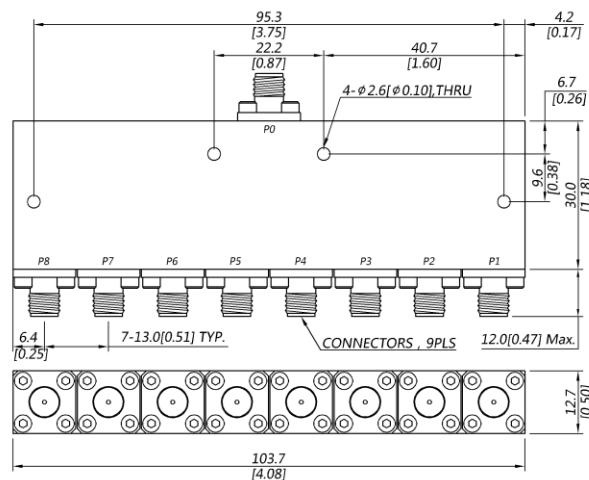
All specifications are subject to change without notice at any time

Frequency Range	GHz	18-40	40-50	50-67
Sum VSWR	:1 (Max.)	1.8	1.8	1.9
Distri. VSWR	:1 (Max.)	1.7	1.8	1.9
Insertion Loss <sup>1</sup>	dB(Max.)	3.2	3.8	4.9
Amp. Unbalance	dB(Max.)	±0.6	±0.7	±0.9
Phase Unbalance	Deg. (Max.)	±8	±10	±12
Isolation	dB(Min.)	16	16	16
Power <sup>2</sup>	W(Max.)	CW: FOR 12, REV 1; Peak: 1000		
Weight	g(Max.)	150	Dimension <sup>3</sup> mm (LxWxH)	30.0x103.7x12.7
Interface	Stainless steel connector; Sum: 1.85mm [F], Distri.: 1.85mm [F]			
Finishing	Alloy iridite			
Temperature	Operating: -55~+85°C; Storage: -55~+100°C			
Environmental	Per MIL-STD-202F, Method 107D, 204D, 213B (optional, contact supplier for detail info.)			
Eng. Customized	N/A			

Note:

- Above Theoretical Loss 9dB
- VSWR ≤ 1.2 required for forward CW; Amp. & phase unbalance required for reversed input signals
- Unless otherwise specified, Decimal tolerance: x.±1; .x±0.5; .xx±0.1

### Outline Drawing



# Power Divider/Combiner

## Model P08N180670 Rev.A

18-67GHz 8-Way Power Divider/Combiner, Coaxial connector

### Typical Graph

Typical test temperature @25°C

