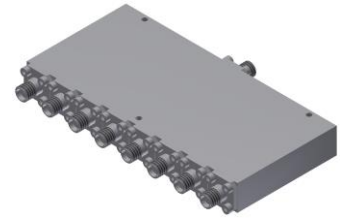


# Power Divider/Combiner

## Model P08N060400 Rev.C

6-40GHz 8-Way Power Divider/Combiner, Coaxial connector



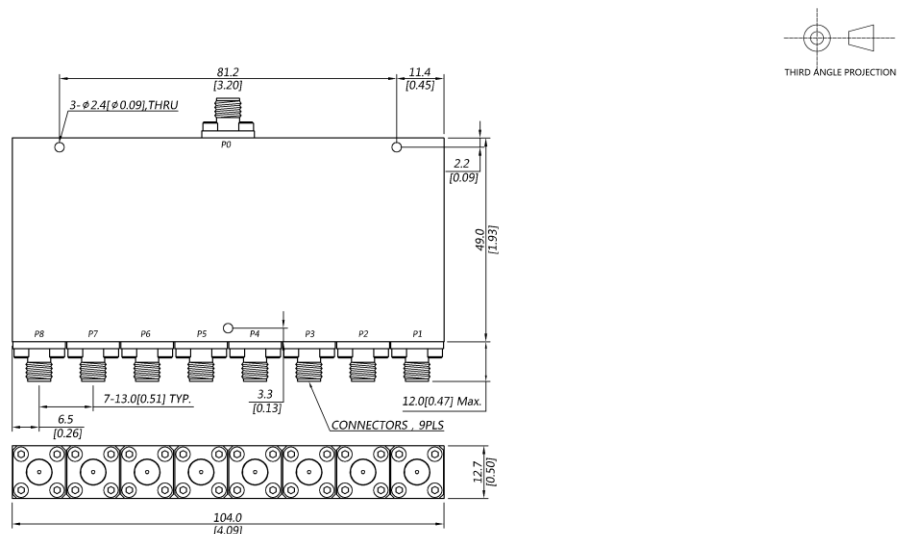
### Specifications

All specifications are subject to change without notice at any time

Frequency Range	GHz	6-18	18-26.5	26.5-40
Sum VSWR	:1 (Max.)	1.7	1.7	1.7
Distri. VSWR	:1 (Max.)	1.6	1.7	1.7
Insertion Loss <sup>1</sup>	dB(Max.)	2.2	2.8	3.8
Amp. Unbalance	dB(Max.)	±0.5	±0.7	±0.8
Phase Unbalance	Deg. (Max.)	±6	±8	±10
Isolation	dB(Min.)	15	18	18
Power <sup>2</sup>	W(Max.)	CW: FOR 20, REV 2; Peak: 3000		
Weight	g(Max.)	215	Dimension <sup>3</sup> mm (LxWxH)	49.0x104x12.7
Interface	Stainless steel connector; Sum: 2.92mm [F], Distri.: 2.92mm [F]			
Finishing	Polyurethane paint			
Temperature	Operating: -55~+85°C; Storage: -55~+100°C			
Environmental	Per MIL-STD-202F, Method 107D, 204D, 213B (optional, contact supplier for detail info.)			
Eng. Customized	N/A			

- Note:
- Above Theoretical Loss 9dB
  - VSWR ≤ 1.2 required for forward CW; Amp. & phase unbalance required for reversed input signals
  - Unless otherwise specified, Decimal tolerance: x±1; .x±0.5; .xx±0.1

### Outline Drawing



# Power Divider/Combiner

## Model P08N060400 Rev.C

6-40GHz 8-Way Power Divider/Combiner, Coaxial connector

### Typical Graph

Typical test temperature @25°C

