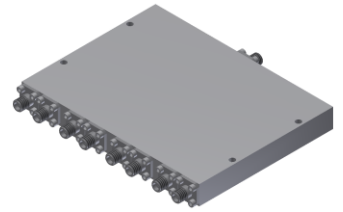


Power Divider/Combiner

Model P08N020670 Rev.A

2-67GHz 8-Way Power Divider/Combiner, Coaxial connector



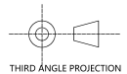
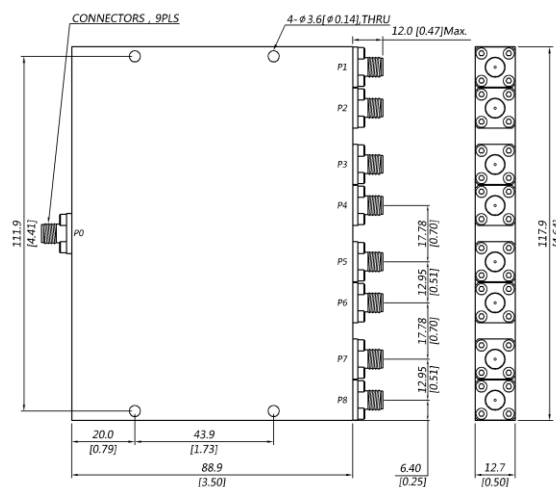
Specifications

All specifications are subject to change without notice at any time

Frequency Range	GHz	2-18	18-40	40-50	50-67
Sum VSWR	:1 (Max.)	1.6	1.7	1.8	1.9
Distri. VSWR	:1 (Max.)	1.6	1.7	1.8	1.9
Insertion Loss ¹	dB(Max.)	3.7	6.4	7.5	9.8
Amp. Unbalance	dB(Max.)	±0.5	±0.7	±0.9	±1.1
Phase Unbalance	Deg. (Max.)	±7	±10	±12	±13
Isolation	dB(Min.)	15	16	16	16
Power ²	W(Max.)	CW: FOR 12, REV 1; Peak: 1000			
Weight	g(Max.)	425	Dimension ³ mm (LxWxH)	88.9x117.9x12.7	
Interface	Sum: 1.85mm [F], Distri.: 1.85mm [F]; Stainless steel connector, Per IEC 61169				
Finishing	Alloy iridite, Per MIL-DTL-5541F				
Temperature	Operating: -55~+85°C; Storage: -55~+100°C				
Environmental	Optional: Per MIL-STD-202F (contact supplier for detail info.)				
Eng. Customized	N/A				

- Note:
- Above Theoretical Loss 9dB
 - VSWR ≤ 1.2 required for forward CW; Amp. & phase unbalance required for reversed input signals
 - Unless otherwise specified, Decimal tolerance: x.±1; .x±0.5; .xx±0.1

Outline Drawing



Power Divider/Combiner

Model P08N020670 Rev.A

2-67GHz 8-Way Power Divider/Combiner, Coaxial connector

Typical Graph

@Ambient Temperature

