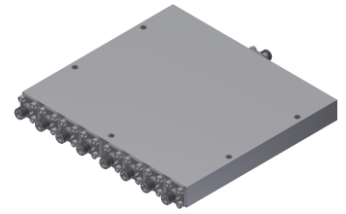


Power Divider/Combiner

Model P08N010500 Rev.A

1-50GHz 8-Way Power Divider/Combiner, Coaxial connector



Specifications

All specifications are subject to change without notice at any time

Frequency Range	GHz	1-18	18-40	40-50
Sum VSWR	:1 (Max.)	1.7	1.7	1.8
Distri. VSWR	:1 (Max.)	1.6	1.7	1.8
Insertion Loss ¹	dB(Max.)	4.5	7.6	9.2
Amp. Unbalance	dB(Max.)	±0.6	±0.8	±0.9
Phase Unbalance	Deg. (Max.)	±7	±10	±12
Isolation	dB(Min.)	15	18	18
Power ²	W(Max.)	CW: FOR 20, REV 1; Peak: 1000		
Weight	g(Max.)	490	Dimension ³ mm (LxWxH)	110x120x12.7
Interface	Stainless steel connector; Sum: 2.4mm [F], Distri.: 2.4mm [F]			
Finishing	Alloy iridite			
Temperature	Operating: -55~+85°C; Storage: -55~+100°C			
Environmental	Per MIL-STD-202F, Method 107D, 204D, 213B (optional, contact supplier for detail info.)			
Eng. Customized	N/A			

Note:

- Above Theoretical Loss 9dB
- VSWR ≤ 1.2 required for forward CW; Amp. & phase unbalance required for reversed input signals
- Unless otherwise specified, Decimal tolerance: x.±1; .x±0.5; .xx±0.1

Outline Drawing

