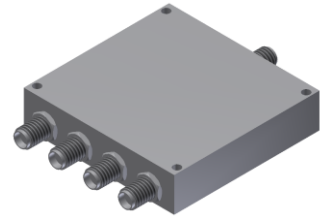


Power Divider

Model P04T01000200 Rev.A

1-2GHz 4-Way Power Divider, Coaxial connector



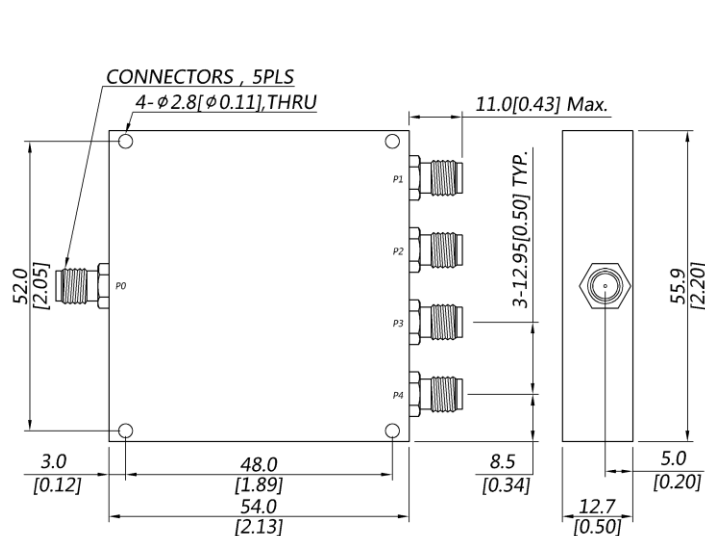
Specifications

All specifications are subject to change without notice at any time

Frequency Range	GHz	1-2
Sum VSWR	:1 (Max.)	1.25
Distri. VSWR	:1 (Max.)	1.2
Insertion Loss ¹	dB(Max.)	0.5
Amp. Unbalance	dB(Max.)	±0.2
Phase Unbalance	Deg. (Max.)	±2
Isolation	dB(Min.)	20
Power ²	W(Max.)	CW: FOR 30, REV 1; Peak: 500
Weight	g(Max.)	85
	Dimension ³	mm (LxWxH)
		54.0x55.9x12.7
Interface	Stainless steel connector; Sum: SMA [F], Distri.: SMA [F]	
Finishing	Alloy iridite	
Temperature	Operating: -40~+70°C; Storage: -55~+85°C	
Environmental	N/A	
Eng. Customized	N/A	

- Note:
1. Above Theoretical Loss 6dB
 2. VSWR ≤ 1.2 required for CW
 3. Unless otherwise specified, Decimal tolerance: x.±1; .x±0.5; .xx±0.1

Outline Drawing



Power Divider

Model P04T01000200 Rev.A

1-2GHz 4-Way Power Divider, Coaxial connector

Typical Graph

Typical test temperature @25°C

