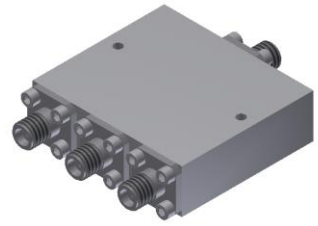


Power Divider/Combiner

Model P03N180265 Rev.B

18-26.5GHz 3-Way Power Divider/Combiner, Coaxial connector



Specifications

All specifications are subject to change without notice at any time

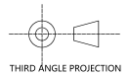
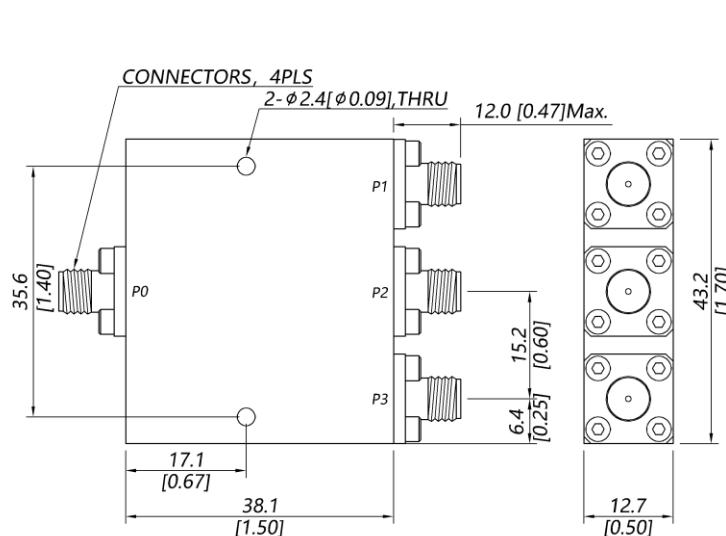
Frequency Range	GHz	18-26.5	
Sum VSWR	:1 (Max.)	1.6	
Distri. VSWR	:1 (Max.)	1.6	
Insertion Loss ¹	dB(Max.)	1.4	
Amp. Unbalance	dB(Max.)	±0.5	
Phase Unbalance	Deg. (Max.)	±6	
Isolation	dB(Min.)	18	
Power ²	W(Max.)	CW: FOR 30, REV 2; Peak: 3000	
Weight	g(Max.)	80	Dimension ³ mm (LxWxH) 38.1x43.2x12.7
Interface	Stainless steel connector; Sum: SMA [F], Distri.: SMA [F]		
Finishing	Alloy iridite		
Temperature	Operating: -55~+85°C; Storage: -55~+100°C		
Environmental	Per MIL-STD-202F, Method 107D, 204D, 213B (optional, contact supplier for detail info.)		
Eng. Customized	N/A		

Note: 1. Above Theoretical Loss 4.8dB

2. VSWR ≤ 1.2 required for forward CW; Amp. & phase unbalance required for reversed input signals

3. Unless otherwise specified, Decimal tolerance: x.±1; .x±0.5; .xx±0.1

Outline Drawing



Power Divider/Combiner

Model P03N180265 Rev.B

18-26.5GHz 3-Way Power Divider/Combiner, Coaxial connector

Typical Graph

Typical test temperature @25°C

