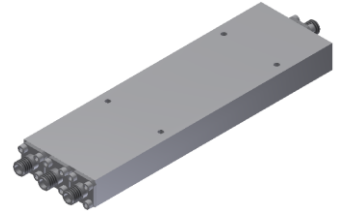


Power Divider/Combiner

Model P03N010265 Rev.A

1-26.5GHz 3-Way Power Divider/Combiner, Coaxial connector



Specifications

All specifications are subject to change without notice at any time

Frequency Range	GHz	1-8	8-18	18-26.5
Sum VSWR	:1 (Max.)	1.4	1.5	1.6
Distri. VSWR	:1 (Max.)	1.4	1.5	1.6
Insertion Loss ¹	dB(Max.)	0.8	1.5	2.2
Amp. Unbalance	dB(Max.)	±0.5	±0.5	±0.6
Phase Unbalance	Deg. (Max.)	±4	±5	±7
Isolation	dB(Min.)	16	18	18
Power ²	W(Max.)	CW: FOR 30, REV 2; Peak: 3000		
Weight	g(Max.)	230	Dimension ³ mm (LxWxH)	145x40.8x12.7
Interface	Stainless steel connector; Sum: SMA [F], Distri.: SMA [F]			
Finishing	Alloy iridite			
Temperature	Operating: -55~+85°C; Storage: -55~+100°C			
Environmental	Per MIL-STD-202F, Method 107D, 204D, 213B (optional, contact supplier for detail info.)			
Eng. Customized	N/A			

- Note:
- Above Theoretical Loss 4.8dB
 - VSWR ≤ 1.2 required for forward CW; Amp. & phase unbalance required for reversed input signals
 - Unless otherwise specified, Decimal tolerance: x.±1; .x±0.5; .xx±0.1

Outline Drawing

