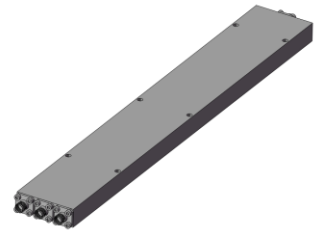


Power Divider/Combiner

Model P03N003400 Rev.A

0.3-40GHz 3-Way Power Divider/Combiner, Coaxial connector



Specifications

All specifications are subject to change without notice at any time

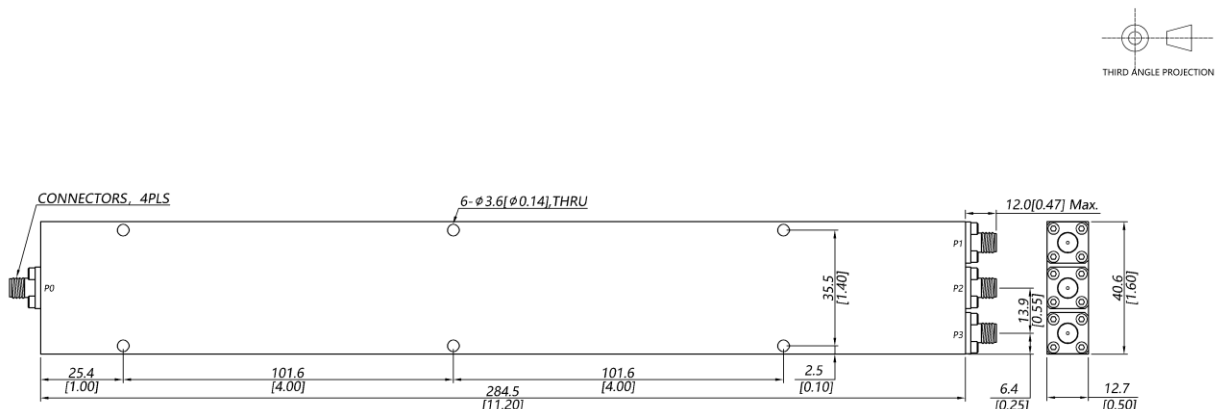
Frequency Range	GHz	0.3-18	18-26.5	26.5-40
Sum VSWR	:1 (Max.)	1.5	1.5	1.6
Distri. VSWR	:1 (Max.)	1.5	1.5	1.6
Insertion Loss ¹	dB(Max.)	2.6	3.4	4.5
Amp. Unbalance	dB(Max.)	±0.5	±0.6	±0.7
Phase Unbalance	Deg. (Max.)	±7	±8	±9
Isolation	dB(Min.)	16	18	18
Power ²	W(Max.)	CW: FOR 20, REV 2; Peak: 3000		
Weight	g(Max.)	420	Dimension ³ mm (LxWxH)	284.5x40.6x12.7
Interface	Stainless steel connector; Sum: 2.92mm [F], Distri.: 2.92mm [F]			
Finishing	Alloy iridite			
Temperature	Operating: -55~+85°C; Storage: -55~+100°C			
Environmental	Per MIL-STD-202F, Method 107D, 204D, 213B (optional, contact supplier for detail info.)			
Eng. Customized	N/A			

Note: 1. Above Theoretical Loss 4.8dB

2. VSWR ≤ 1.2 required for forward CW; Amp. & phase unbalance required for reversed input signals

3. Unless otherwise specified, Decimal tolerance: x.±1; .x±0.5; .xx±0.1

Outline Drawing



Power Divider/Combiner

Model P03N003400 Rev.A

0.3-40GHz 3-Way Power Divider/Combiner, Coaxial connector

Typical Graph

Typical test temperature @25°C

