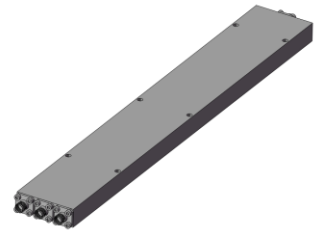


# Power Divider/Combiner

## Model P03N003180 Rev.A

0.3-18GHz 3-Way Power Divider/Combiner, Coaxial connector



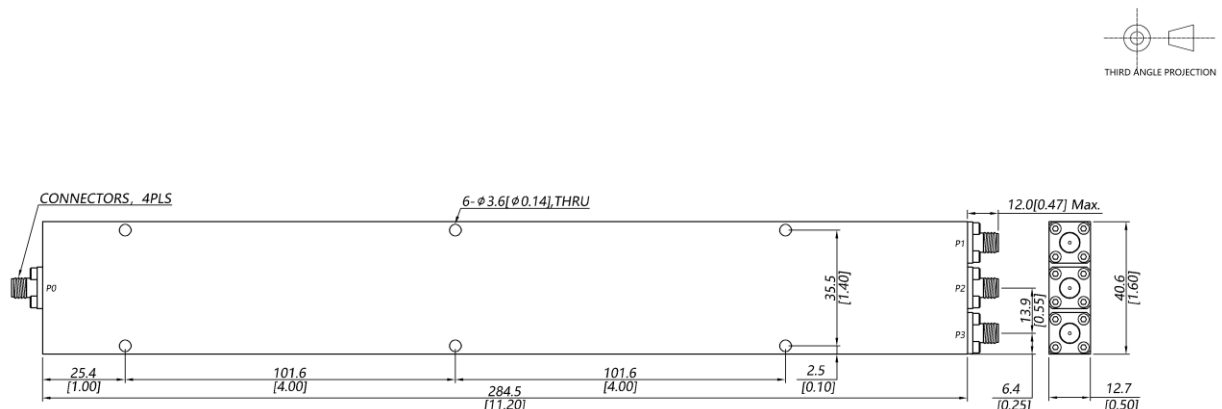
### Specifications

All specifications are subject to change without notice at any time

|                             |   |                               |   |
|-----------------------------|---|-------------------------------|---|
| Frequency Range             | GHz   | 0.3-8                         | 8-18  |
| Sum VSWR                    | :1 (Max.)   | 1.5                           | 1.5   |
| Distri. VSWR                | :1 (Max.)   | 1.5                           | 1.5   |
| Insertion Loss <sup>1</sup> | dB(Max.)  | 1.6                           | 2.6   |
| Amp. Unbalance              | dB(Max.)  | ±0.4                          | ±0.5  |
| Phase Unbalance             | Deg. (Max.)   | ±5                            | ±6  |
| Isolation                   | dB(Min.)  | 17                            | 18  |
| Power <sup>2</sup>          | W(Max.)   | CW: FOR 30, REV 5; Peak: 3000 |   |
| Weight                      | g(Max.)   | 420                           | Dimension <sup>3</sup> mm (LxWxH) 284.5x40.6x12.7 |
| Interface                   | Stainless steel connector; Sum: SMA [F], Distri.: SMA [F]                               |                               |   |
| Finishing                   | Alloy iridite   |                               |   |
| Temperature                 | Operating: -55~+85°C; Storage: -55~+100°C   |                               |   |
| Environmental               | Per MIL-STD-202F, Method 107D, 204D, 213B (optional, contact supplier for detail info.) |                               |   |
| Eng. Customized             | N/A   |                               |   |

- Note:
- Above Theoretical Loss 4.8dB
  - VSWR ≤ 1.2 required for forward CW; Amp. & phase unbalance required for reversed input signals
  - Unless otherwise specified, Decimal tolerance: x.±1; .x±0.5; .xx±0.1

### Outline Drawing



# Power Divider/Combiner

## Model P03N003180 Rev.A

0.3-18GHz 3-Way Power Divider/Combiner, Coaxial connector

### Typical Graph

Typical test temperature @25°C

