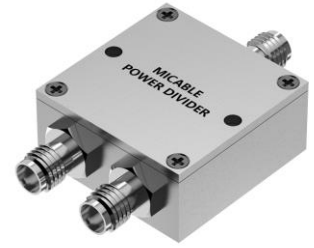


Power Divider

Model P02T02000400 Rev.B

2-4GHz 2-Way Power Divider, Coaxial connector



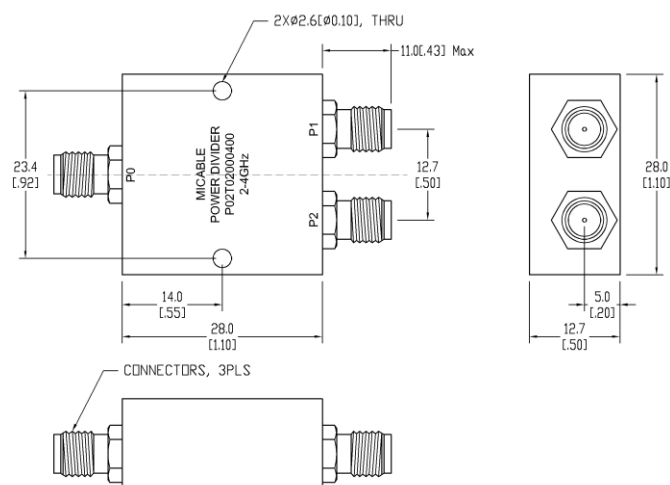
All specifications are subject to change without notice at any time

Specifications

Frequency Range	GHz	2-4	
Sum VSWR	:1 (Max.)	1.25	
Distri. VSWR	:1 (Max.)	1.2	
Insertion Loss ¹	dB(Max.)	0.35	
Amp. Unbalance	dB(Max.)	±0.2	
Phase Unbalance	Deg. (Max.)	±2	
Isolation	dB(Min.)	20	
Power ²	W(Max.)	CW: FOR 30, REV 1; Peak: 500	
Weight	g(Max.)	30	Dimension ³ mm (LxWxH) 28.0x28.0x12.7
Interface	Sum: SMA [F], Distri.: SMA [F]; Stainless steel connector, Per IEC 61169		
Finishing	Sand blast		
Temperature	Operating: -40~+70°C; Storage: -55~+85°C		
Environmental	N/A		
Eng. Customized	N/A		

- Note:
1. Above Theoretical Loss 3dB
 2. VSWR ≤ 1.2 required for CW
 3. Unless otherwise specified, Decimal tolerance: x.±1; .x±0.5; .xx±0.1

Outline Drawing



Power Divider

Model P02T02000400 Rev.B

2-4GHz 2-Way Power Divider, Coaxial connector

Typical Graph

@ Ambient Temperature

