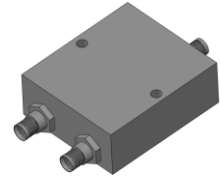


# Power Divider

## Model P02T01000300 Rev.B

1-3GHz 2-Way Power Divider, Coaxial connector



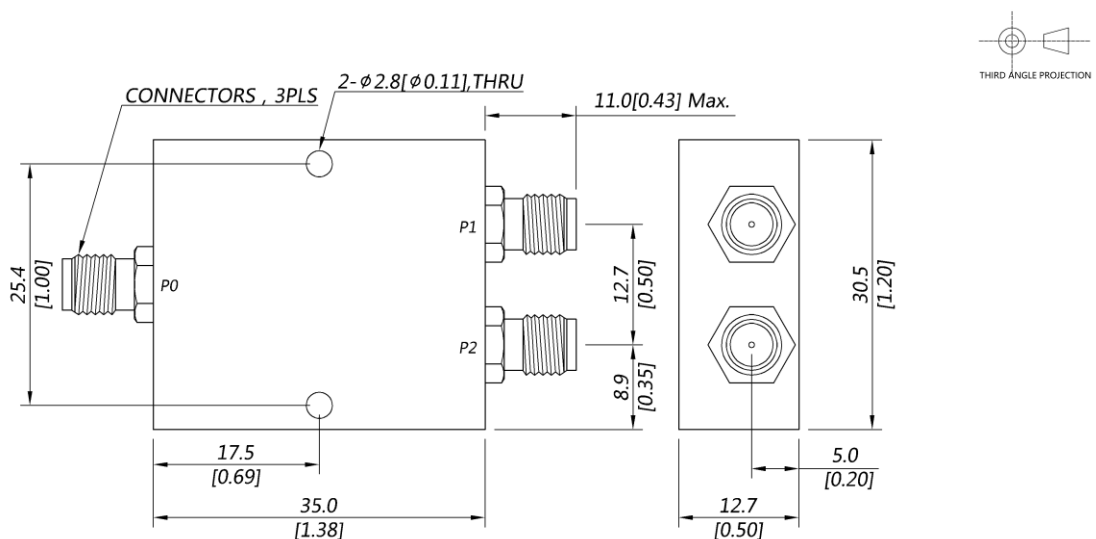
### Specifications

All specifications are subject to change without notice at any time

Frequency Range	GHz	1-3
Sum VSWR	:1 (Max.)	1.3
Distri. VSWR	:1 (Max.)	1.2
Insertion Loss <sup>1</sup>	dB(Max.)	0.5
Amp. Unbalance	dB(Max.)	±0.15
Phase Unbalance	Deg. (Max.)	±1.5
Isolation	dB(Min.)	20
Power <sup>2</sup>	W(Max.)	CW: FOR 30, REV 1; Peak: 500
Weight	g(Max.)	35
	Dimension <sup>3</sup>	mm (LxWxH)
		35.0x30.5x12.7
Interface	Stainless steel connector; Sum: SMA [F], Distri.: SMA [F]	
Finishing	Alloy iridite	
Temperature	Operating: -40~+70°C; Storage: -55~+85°C	
Environmental	N/A	
Eng. Customized	N/A	

- Note:
1. Above Theoretical Loss 3dB
  2. VSWR ≤ 1.2 required for CW
  3. Unless otherwise specified, Decimal tolerance: x.±1; .x±0.5; .xx±0.1

### Outline Drawing



# Power Divider

## Model P02T01000300 Rev.B

1-3GHz 2-Way Power Divider, Coaxial connector

### Typical Graph

Typical test temperature @25°C

