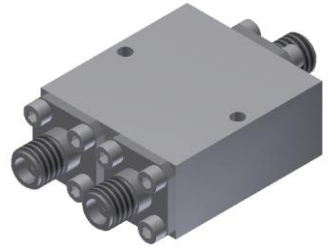


Power Divider/Combiner

Model P02N060670 Rev.A

6-67GHz 2-Way Power Divider/Combiner, Coaxial connector



Specifications

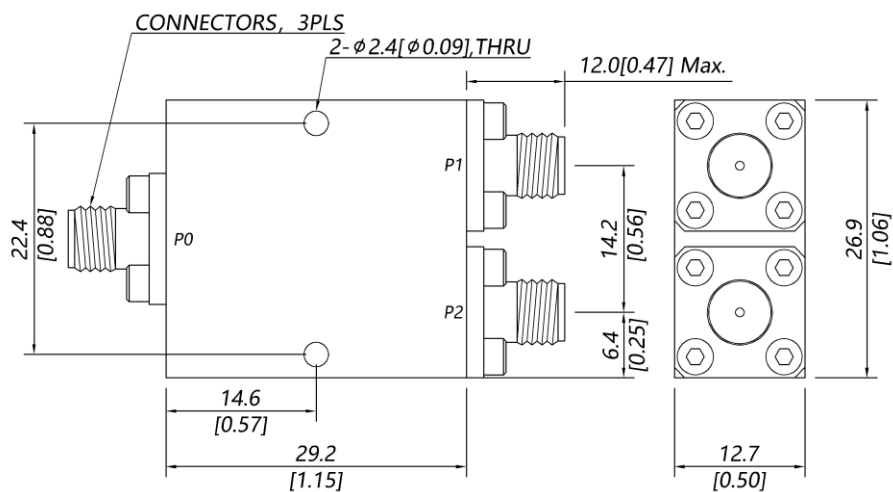
All specifications are subject to change without notice at any time

Frequency Range	GHz	6-18	18-40	40-50	50-67
Sum VSWR	:1 (Max.)	1.5	1.6	1.7	1.8
Distri. VSWR	:1 (Max.)	1.5	1.6	1.7	1.8
Insertion Loss ¹	dB(Max.)	1	1.5	1.8	2.4
Amp. Unbalance	dB(Max.)	±0.3	±0.4	±0.5	±0.6
Phase Unbalance	Deg. (Max.)	±4	±5	±7	±8
Isolation	dB(Min.)	16	18	18	18
Power ²	W(Max.)	CW: FOR 12, REV 1; Peak: 1000			
Weight	g(Max.)	40	Dimension ³ mm (LxWxH)	29.2x26.9x12.7	
Interface	Stainless steel connector; Sum: 1.85mm [F], Distri.: 1.85mm [F]				
Finishing	Nickel plating				
Temperature	Operating: -55~+85°C; Storage: -55~+100°C				
Environmental	Per MIL-STD-202F, Method 107D, 204D, 213B (optional, contact supplier for detail info.)				
Eng. Customized	N/A				

Note:

- Above Theoretical Loss 3dB
- VSWR ≤ 1.2 required for forward CW; Amp. & phase unbalance required for reversed input signals
- Unless otherwise specified, Decimal tolerance: x.±1; .x±0.5; .xx±0.1

Outline Drawing



Power Divider/Combiner

Model P02N060670 Rev.A

6-67GHz 2-Way Power Divider/Combiner, Coaxial connector

Typical Graph

Typical test temperature @25°C

