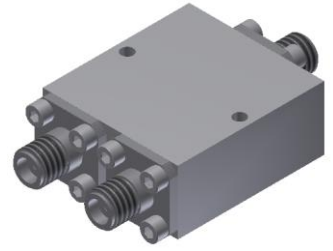


Power Divider/Combiner

Model P02N060500 Rev.B

6-50GHz 2-Way Power Divider/Combiner, Coaxial connector



Specifications

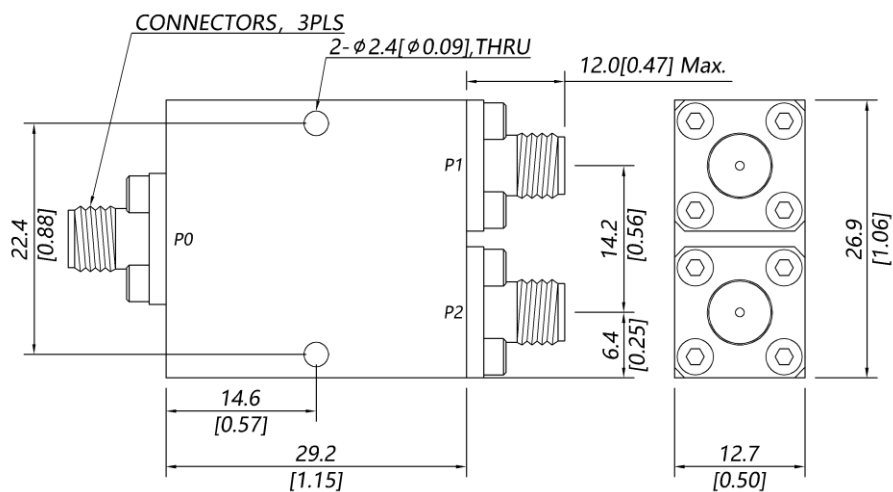
All specifications are subject to change without notice at any time

| | | | | |
|-----------------------------|---|-------------------------------|-----------------------------------|----------------|
| Frequency Range | GHz | 6-18 | 18-40 | 40-50 |
| Sum VSWR | :1 (Max.) | 1.5 | 1.6 | 1.7 |
| Distri. VSWR | :1 (Max.) | 1.5 | 1.6 | 1.7 |
| Insertion Loss ¹ | dB(Max.) | 1 | 1.5 | 1.7 |
| Amp. Unbalance | dB(Max.) | ±0.2 | ±0.3 | ±0.4 |
| Phase Unbalance | Deg. (Max.) | ±3 | ±4 | ±5 |
| Isolation | dB(Min.) | 16 | 16 | 16 |
| Power ² | W(Max.) | CW: FOR 20, REV 1; Peak: 1000 | | |
| Weight | g(Max.) | 40 | Dimension ³ mm (LxWxH) | 29.2x26.9x12.7 |
| Interface | Stainless steel connector; Sum: 2.4mm [F], Distri.: 2.4mm [F] | | | |
| Finishing | Nickel plating | | | |
| Temperature | Operating: -55~+85°C; Storage: -55~+100°C | | | |
| Environmental | Per MIL-STD-202F, Method 107D, 204D, 213B (optional, contact supplier for detail info.) | | | |
| Eng. Customized | N/A | | | |

Note:

- Above Theoretical Loss 3dB
- VSWR ≤ 1.2 required for forward CW; Amp. & phase unbalance required for reversed input signals
- Unless otherwise specified, Decimal tolerance: x.±1; .x±0.5; .xx±0.1

Outline Drawing



Power Divider/Combiner

Model P02N060500 Rev.B

6-50GHz 2-Way Power Divider/Combiner, Coaxial connector

Typical Graph

Typical test temperature @25°C

