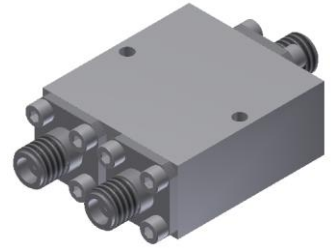


# Power Divider/Combiner

## Model P02N060265 Rev.B

6-26.5GHz 2-Way Power Divider/Combiner, Coaxial connector



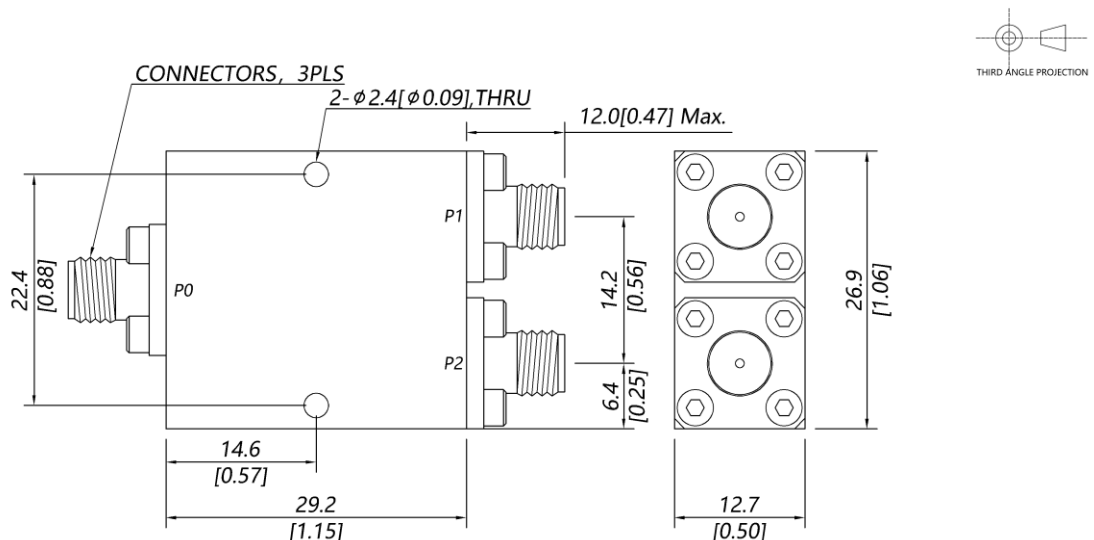
### Specifications

All specifications are subject to change without notice at any time

Frequency Range	GHz	6-18	18-26.5
Sum VSWR	:1 (Max.)	1.4	1.5
Distri. VSWR	:1 (Max.)	1.4	1.5
Insertion Loss <sup>1</sup>	dB(Max.)	0.7	1.1
Amp. Unbalance	dB(Max.)	±0.2	±0.3
Phase Unbalance	Deg. (Max.)	±3	±4
Isolation	dB(Min.)	18	18
Power <sup>2</sup>	W(Max.)	CW: FOR 30, REV 2; Peak: 3000	
Weight	g(Max.)	40	Dimension <sup>3</sup> mm (LxWxH) 29.2x26.9x12.7
Interface	Stainless steel connector; Sum: SMA [F], Distri.: SMA [F]		
Finishing	Nickel plating		
Temperature	Operating: -55~+85°C; Storage: -55~+100°C		
Environmental	Per MIL-STD-202F, Method 107D, 204D, 213B (optional, contact supplier for detail info.)		
Eng. Customized	N/A		

- Note:
- Above Theoretical Loss 3dB
  - VSWR ≤ 1.2 required for forward CW; Amp. & phase unbalance required for reversed input signals
  - Unless otherwise specified, Decimal tolerance: x.±1; .x±0.5; .xx±0.1

### Outline Drawing



# Power Divider/Combiner

## Model P02N060265 Rev.B

6-26.5GHz 2-Way Power Divider/Combiner, Coaxial connector

### Typical Graph

Typical test temperature @25°C

