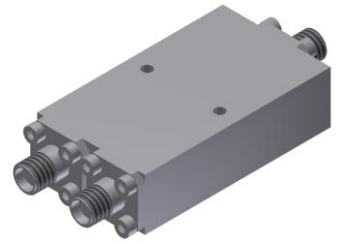


Power Divider/Combiner

Model P02N020265 Rev.B

2-26.5GHz 2-Way Power Divider/Combiner, Coaxial connector



Specifications

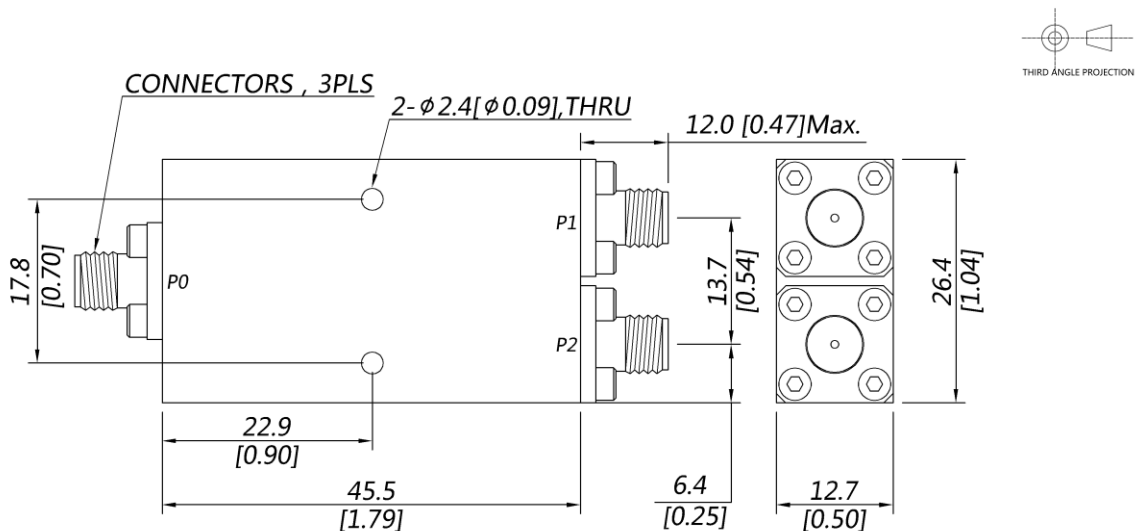
All specifications are subject to change without notice at any time

Frequency Range	GHz	2-8	8-18	18-26.5
Sum VSWR	:1 (Max.)	1.4	1.5	1.5
Distri. VSWR	:1 (Max.)	1.4	1.5	1.5
Insertion Loss ¹	dB(Max.)	0.7	1	1.2
Amp. Unbalance	dB(Max.)	±0.2	±0.3	±0.3
Phase Unbalance	Deg. (Max.)	±2	±3	±3
Isolation	dB(Min.)	18	18	18
Power ²	W(Max.)	CW: FOR 30, REV 2; Peak: 3000		
Weight	g(Max.)	55	Dimension ³ mm (LxWxH)	45.5x26.4x12.7
Interface	Stainless steel connector; Sum: SMA [F], Distri.: SMA [F]			
Finishing	Alloy iridite			
Temperature	Operating: -55~+85°C; Storage: -55~+100°C			
Environmental	Per MIL-STD-202F, Method 107D, 204D, 213B (optional, contact supplier for detail info.)			
Eng. Customized	N/A			

Note:

- Above Theoretical Loss 3dB
- VSWR ≤ 1.2 required for forward CW; Amp. & phase unbalance required for reversed input signals
- Unless otherwise specified, Decimal tolerance: x.±1; .x±0.5; .xx±0.1

Outline Drawing



Power Divider/Combiner

Model P02N020265 Rev.B

2-26.5GHz 2-Way Power Divider/Combiner, Coaxial connector

Typical Graph

Typical test temperature @25°C

