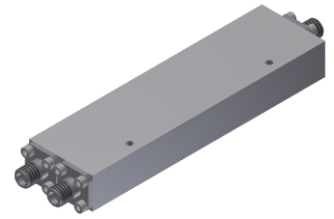


Power Divider/Combiner

Model P02N010670 Rev.A

1-67GHz 2-Way Power Divider/Combiner, Coaxial connector



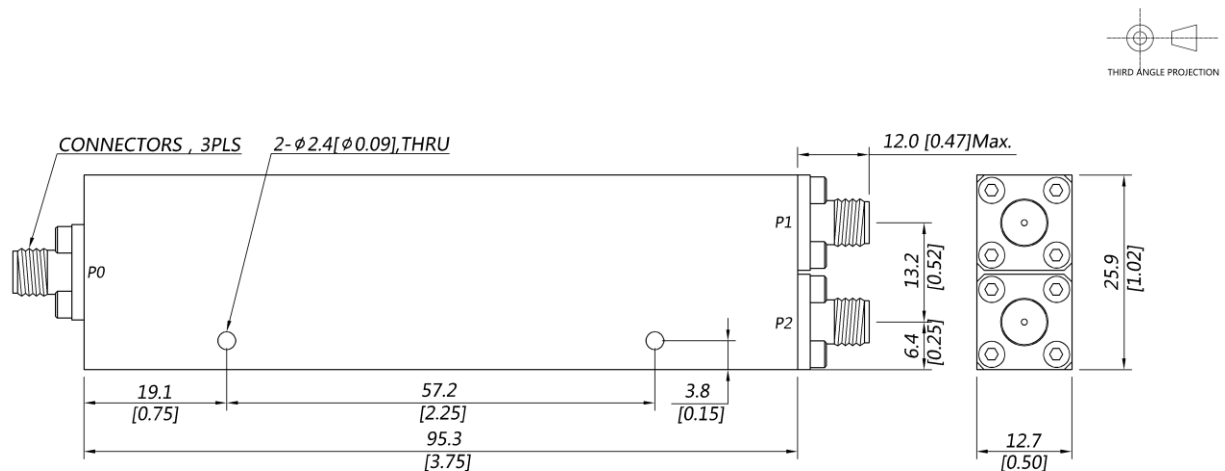
Specifications

All specifications are subject to change without notice at any time

Frequency Range	GHz	1-18	18-40	40-50	50-67
Sum VSWR	:1 (Max.)	1.5	1.6	1.6	1.7
Distri. VSWR	:1 (Max.)	1.5	1.6	1.6	1.7
Insertion Loss ¹	dB(Max.)	1.4	2.5	3	3.7
Amp. Unbalance	dB(Max.)	±0.3	±0.4	±0.5	±0.6
Phase Unbalance	Deg. (Max.)	±4	±5	±7	±8
Isolation	dB(Min.)	16	18	18	18
Power ²	W(Max.)	CW: FOR 12, REV 1; Peak: 1000			
Weight	g(Max.)	105	Dimension ³	mm (LxWxH)	95.3x25.9x12.7
Interface	Stainless steel connector; Sum: 1.85mm [F], Distri.: 1.85mm [F]				
Finishing	Alloy iridite				
Temperature	Operating: -55~+85°C; Storage: -55~+100°C				
Environmental	Per MIL-STD-202F, Method 107D, 204D, 213B (optional, contact supplier for detail info.)				
Eng. Customized	N/A				

- Note:
1. Above Theoretical Loss 3dB
 2. VSWR ≤ 1.2 required for forward CW; Amp. & phase unbalance required for reversed input signals
 3. Unless otherwise specified, Decimal tolerance: x.±1; .x±0.5; .xx±0.1

Outline Drawing



Power Divider/Combiner

Model P02N010670 Rev.A

1-67GHz 2-Way Power Divider/Combiner, Coaxial connector

Typical Graph

Typical test temperature @25°C

