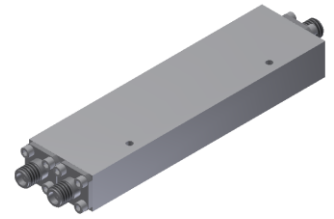


# Power Divider/Combiner

## Model P02N010500 Rev.C

1-50GHz 2-Way Power Divider/Combiner, Coaxial connector



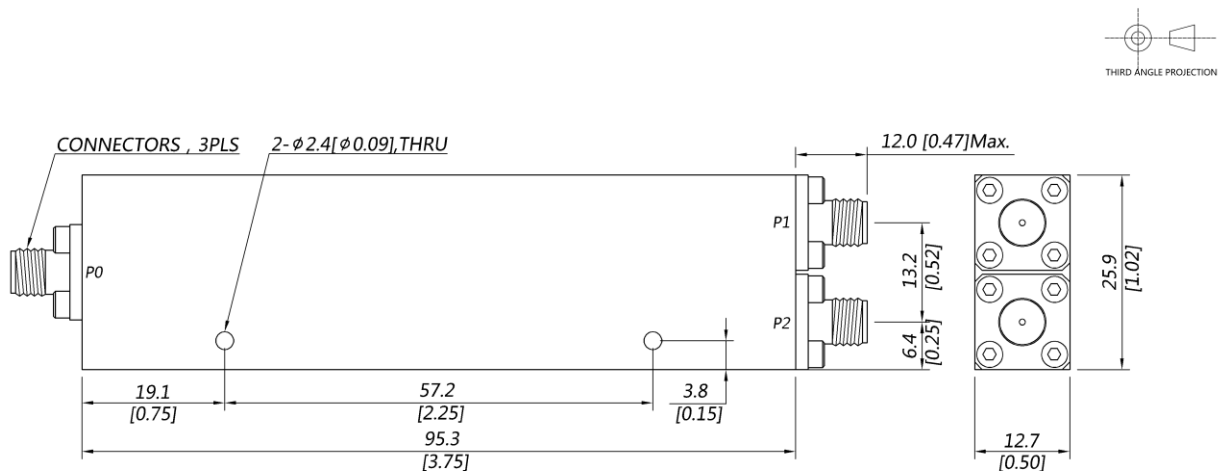
### Specifications

All specifications are subject to change without notice at any time

Frequency Range	GHz	1-18	18-40	40-50
Sum VSWR	:1 (Max.)	1.5	1.6	1.6
Distri. VSWR	:1 (Max.)	1.5	1.6	1.6
Insertion Loss <sup>1</sup>	dB(Max.)	1.4	2.5	3
Amp. Unbalance	dB(Max.)	±0.3	±0.4	±0.4
Phase Unbalance	Deg. (Max.)	±4	±5	±6
Isolation	dB(Min.)	16	18	18
Power <sup>2</sup>	W(Max.)	CW: FOR 20, REV 1; Peak: 1000		
Weight	g(Max.)	105	Dimension <sup>3</sup> mm (LxWxH)	95.3x25.9x12.7
Interface	Stainless steel connector; Sum: 2.4mm [F], Distri.: 2.4mm [F]			
Finishing	Alloy iridite			
Temperature	Operating: -55~+85°C; Storage: -55~+100°C			
Environmental	Per MIL-STD-202F, Method 107D, 204D, 213B (optional, contact supplier for detail info.)			
Eng. Customized	N/A			

- Note:
- Above Theoretical Loss 3dB
  - VSWR ≤ 1.2 required for forward CW; Amp. & phase unbalance required for reversed input signals
  - Unless otherwise specified, Decimal tolerance: x.±1; .x±0.5; .xx±0.1

### Outline Drawing



# Power Divider/Combiner

## Model P02N010500 Rev.C

1-50GHz 2-Way Power Divider/Combiner, Coaxial connector

### Typical Graph

Typical test temperature @25°C

