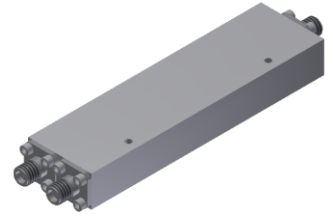


Power Divider/Combiner

Model P02N010400 Rev.B

1-40GHz 2-Way Power Divider/Combiner, Coaxial connector



Specifications

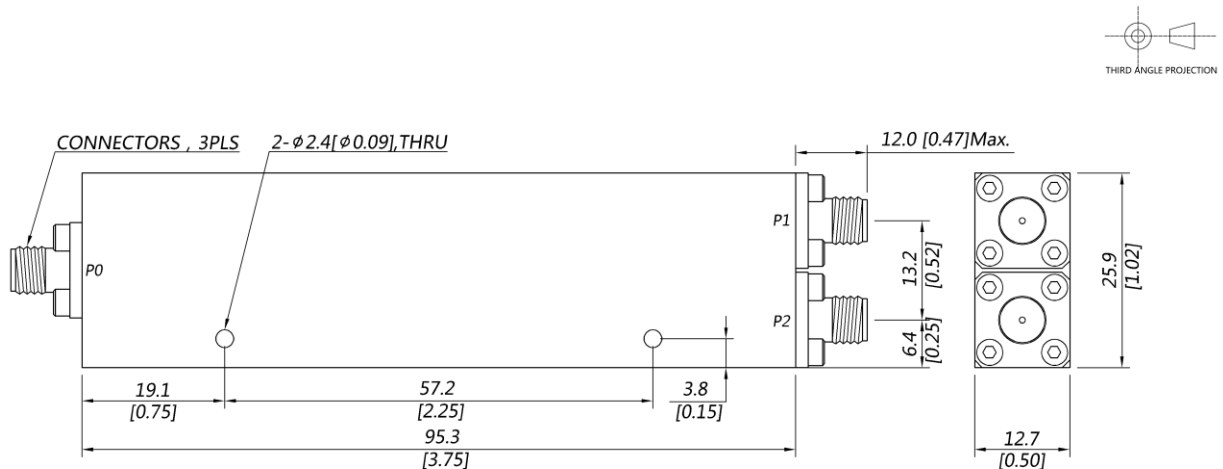
All specifications are subject to change without notice at any time

Frequency Range	GHz	1-18	18-26.5	26.5-40
Sum VSWR	:1 (Max.)	1.4	1.5	1.5
Distri. VSWR	:1 (Max.)	1.4	1.5	1.5
Insertion Loss ¹	dB(Max.)	1.4	1.8	2.4
Amp. Unbalance	dB(Max.)	±0.3	±0.3	±0.4
Phase Unbalance	Deg. (Max.)	±3	±4	±5
Isolation	dB(Min.)	18	18	18
Power ²	W(Max.)	CW: FOR 20, REV 2; Peak: 3000		
Weight	g(Max.)	105	Dimension ³ mm (LxWxH)	95.3x25.9x12.7
Interface	Stainless steel connector; Sum: 2.92mm [F], Distri.: 2.92mm [F]			
Finishing	Alloy iridite			
Temperature	Operating: -55~+85°C; Storage: -55~+100°C			
Environmental	Per MIL-STD-202F, Method 107D, 204D, 213B (optional, contact supplier for detail info.)			
Eng. Customized	N/A			

Note:

1. Above Theoretical Loss 3dB
2. VSWR ≤ 1.2 required for forward CW; Amp. & phase unbalance required for reversed input signals
3. Unless otherwise specified, Decimal tolerance: x.±1; .x±0.5; .xx±0.1

Outline Drawing



Power Divider/Combiner

Model P02N010400 Rev.B

1-40GHz 2-Way Power Divider/Combiner, Coaxial connector

Typical Graph

Typical test temperature @25°C

