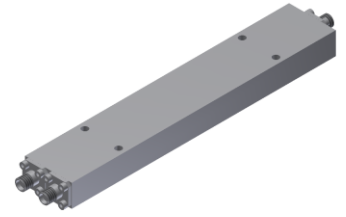


Power Divider/Combiner

Model P02N005400 Rev.C

0.5-40GHz 2-Way Power Divider/Combiner, Coaxial connector



Specifications

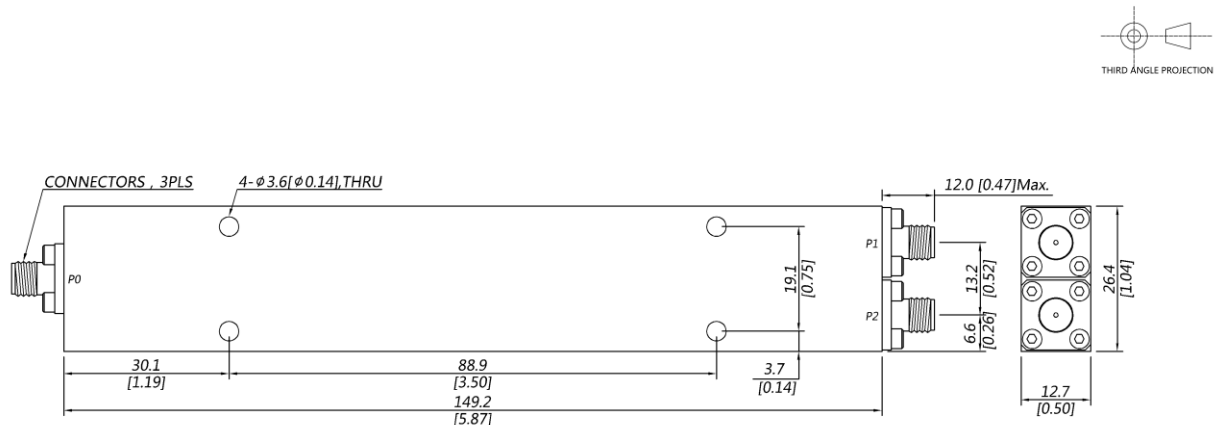
All specifications are subject to change without notice at any time

Frequency Range	GHz	0.5-8	8-18	18-26.5	26.5-40
Sum VSWR	:1 (Max.)	1.6	1.6	1.6	1.6
Distri. VSWR	:1 (Max.)	1.5	1.5	1.6	1.6
Insertion Loss ¹	dB(Max.)	1.5	2.1	2.6	3.5
Amp. Unbalance	dB(Max.)	±0.2	±0.3	±0.3	±0.4
Phase Unbalance	Deg. (Max.)	±3	±4	±4	±5
Isolation	dB(Min.)	16	18	18	18
Power ²	W(Max.)	CW: FOR 20, REV 2; Peak: 3000			
Weight	g(Max.)	150	Dimension ³ mm (LxWxH)	149.2x26.4x12.7	
Interface	Stainless steel connector; Sum: 2.92mm [F], Distri.: 2.92mm [F]				
Finishing	Alloy iridite				
Temperature	Operating: -55~+85°C; Storage: -55~+100°C				
Environmental	Per MIL-STD-202F, Method 107D, 204D, 213B (optional, contact supplier for detail info.)				
Eng. Customized	N/A				

Note:

- Above Theoretical Loss 3dB
- VSWR ≤ 1.2 required for forward CW; Amp. & phase unbalance required for reversed input signals
- Unless otherwise specified, Decimal tolerance: x.±1; .x±0.5; .xx±0.1

Outline Drawing



Power Divider/Combiner

Model P02N005400 Rev.C

0.5-40GHz 2-Way Power Divider/Combiner, Coaxial connector

Typical Graph

Typical test temperature @25°C

