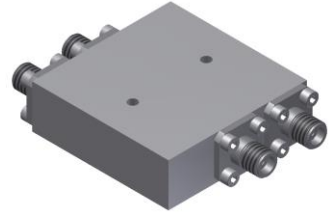


# 4-Port 180° Hybrid Coupler

## Model HN060265 Rev.B

6-26.5GHz 4-Port 3dB 180° Hybrid, Coaxial connector



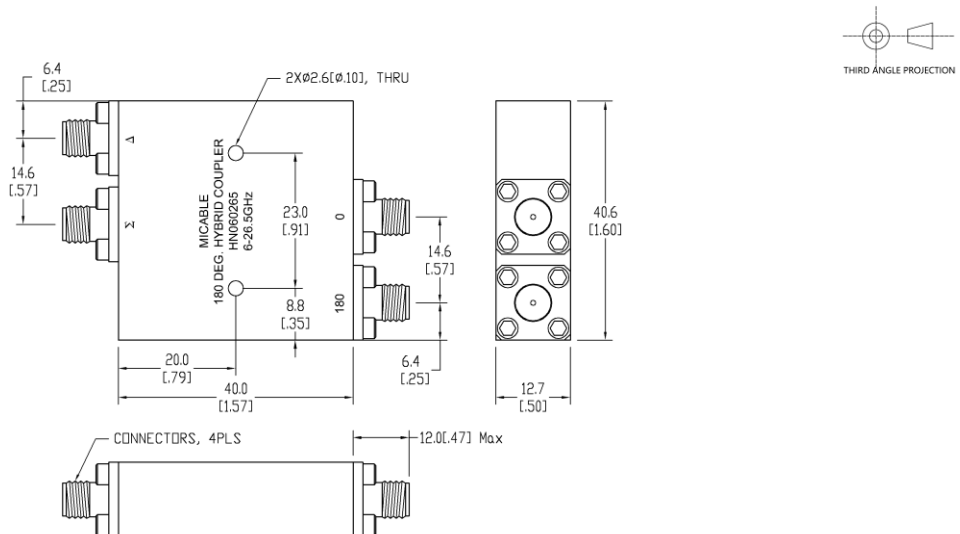
### Specifications

All specifications are subject to change without notice at any time

Frequency Range	GHz	6-18	18-26.5
Nom. Phase	Deg. (Typ.)	180	180
Ports VSWR	:1 (Max.)	1.6	1.7
Insertion Loss <sup>1</sup>	dB(Max.)	1.5	2
Amp. Unbalance	dB(Max.)	±0.8	±0.8
Phase Unbalance	Deg. (Max.)	±10	±10
Isolation	dB(Min.)	16	15
Power <sup>2</sup>	W(Max.)	CW: 30; Peak: 3000	
Weight	g(Max.)	75	Dimension <sup>3</sup> mm (LxWxH) 40.0x40.6x12.7
Interface	Sum: SMA [F], Distri.: SMA [F]; Stainless steel connector, Per IEC 61169		
Finishing	Alloy iridite, Per MIL-DTL-5541F		
Temperature	Operating: -55~+85°C; Storage: -55~+100°C		
Environmental	Optional: Per MIL-STD-202F (contact supplier for detail info.)		
Eng. Customized	N/A		

- Note:
- Above Theoretical Loss 3dB
  - VSWR ≤ 1.2 required for CW
  - Unless otherwise specified, Decimal tolerance: x.±1; .x±0.5; .xx±0.1

### Outline Drawing



# 4-Port 180° Hybrid Coupler

## Model HN060265 Rev.B

6-26.5GHz 4-Port 3dB 180° Hybrid, Coaxial connector

### Typical Graph

@Ambient Temperature

