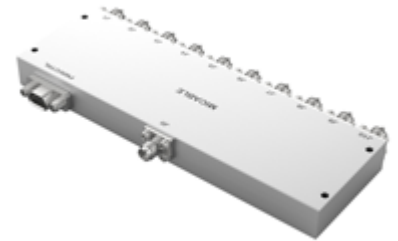


Solid State Switch

Model ESP10T001085A Rev.A

0.1-8.5GHz Absorptive SP10T Solid State Switch



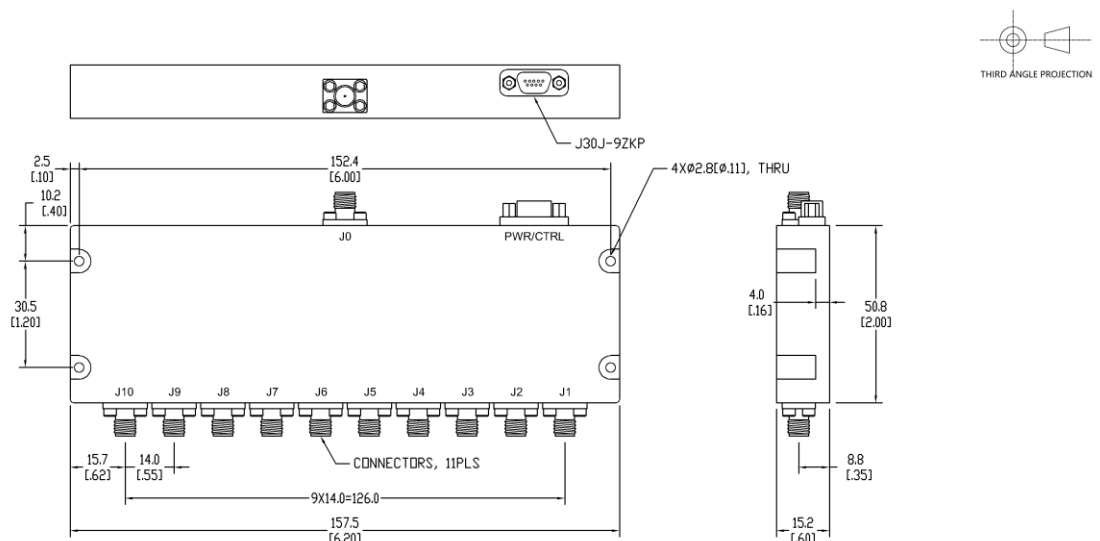
Specifications

All specifications are subject to change without notice at any time

Frequency Range	GHz	0.1-8.5
VSWR	:1(Max.)	2
Insertion Loss	dB(Max.)	6
Amp Consistency	dB(Max.)	±0.5
Isolation	dB(Min.)	50
Switching Time ¹	ns(Typ.)	200
P1dB	dBm(Min.)	30
Power	Through Path: 30dBm@0.1-0.5GHz, 33dBm@0.5-8.5GHz; Terminated Path: 24dBm	
Dimension & Weight ²	50.8Lx157.5Wx15.2H (mm) / TBD	
Connector	RF: SMA[F]; Power & Control: MDM-9P	
Power Supply	+5~+28VDC@ 100mA max.	
Control	RS232	
Finishing	Alloy iridite, Per MIL-DTL-5541F	
Temperature	Operating: -40 ~ +70°C, Storage: -55 ~ +85°C	
Environmental	N/A	

- Note:
1. Communication time is not included
 2. Unless otherwise specified, Decimal tolerance: x.±1; .x±0.5; .xx±0.1

Outline Drawing

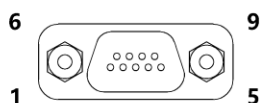


Solid State Switch

Model **ESP10T001085A Rev.A**

0.1-8.5GHz Absorptive SP10T Solid State Switch

Interface Connector Pin Out



Pin	Definition	Description
1	N/C	/
2	RXD	Transmit
3	TXD	Receive
4	N/C	/
5	GND	Signal Ground
6	+5~+28V	Switch Power
7	+5~+28V	Switch Power
8	GND	Ground
9	GND	Ground