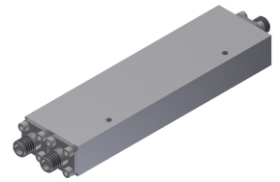


DC Start Power Divider

Model DP02-500 Rev.A

DC-50GHz 2-Way Power Divider, Coaxial connector



Micable DP02-500 can accept a DC-50GHz signal and divide it into 2 output signals with extremely equal amplitude & phase. It is ideal for test equipment, high speed data communication and optical module test.

Specifications

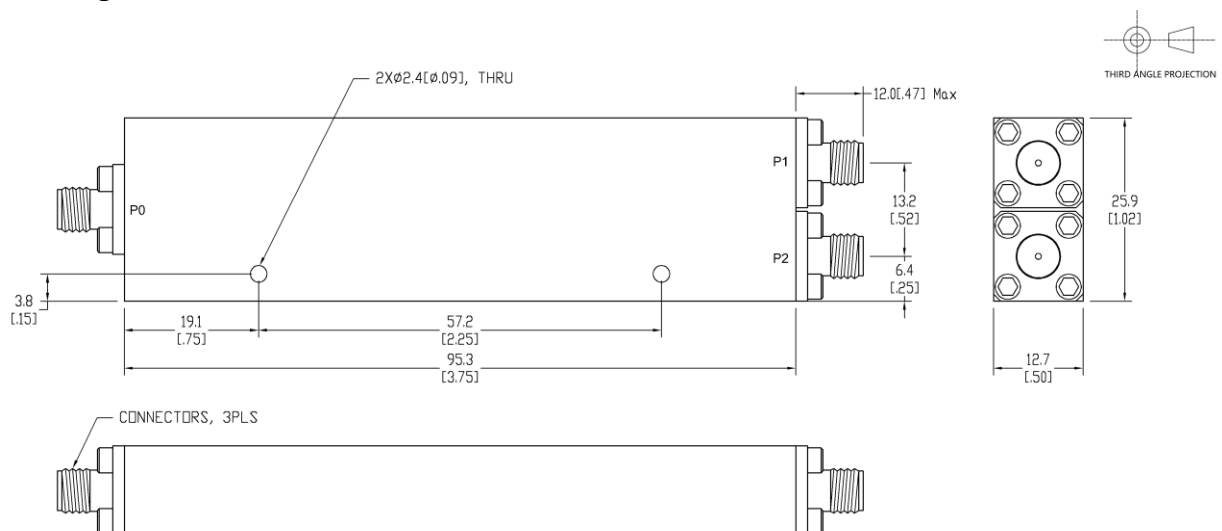
All specifications are subject to change without notice at any time

Frequency Range	GHz	DC-1	1-26.5	26.5-50
Sum VSWR	:1 (Typ./Max.)	1.7/-	1.3/1.6	1.3/1.6
Distri. VSWR	:1 (Typ./Max.)	1.7/-	1.3/1.6	1.3/1.6
Insertion Loss	dB(Typ./Max.)	0.8/1.6	1.2/1.9	2.2/3
Amp. Unbalance	dB(Typ./Max.)	±0.1/±0.3	±0.2/±0.3	±0.3/±0.5
Phase Unbalance	Deg. (Typ./Max.)	±1/±3	±3/±4	±4/±6
Isolation	dB (Typ./Min.)	8/-	22/16	22/18
Power ²	W(Max.)	CW: 20; Peak: 1000		
Weight	g(Max.)	105	Dimension ³ mm	95.3x25.9x12.7
Interface	Sum: 2.4mm [F], Distri.: 2.4mm [F]; Stainless steel connector, Per IEC 61169			
Finishing	Alloy iridite, Per MIL-DTL-5541F			
Temperature	Operating: -55--+85°C; Storage: -55--+100°C			
Environmental	Optional: Per MIL-STD-202F (contact supplier for detail info.)			
Eng. Customized	N/A			

Note:

1. Above Theoretical Loss 3dB
2. VSWR ≤ 1.2 required for CW
3. Unless otherwise specified, Decimal tolerance: x.±1; .x±0.5; .xx±0.1

Outline Drawing



DC Start Power Divider

Model DP02-500 Rev.A

DC-50GHz 2-Way Power Divider, Coaxial connector

Typical Graph

@Ambient Temperature

