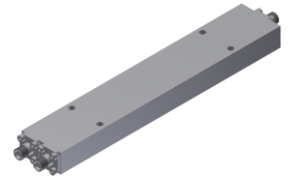


DC Start Power Divider

Model DP02-265 Rev.A

DC-26.5GHz 2-Way Power Divider, Coaxial connector

Micable DP02-265 can accept a DC~26.5GHz signal and divide it into 2 output signals with extremely equal amplitude & phase. It is ideal for test equipment, high speed data communication and optical module test.



Specifications

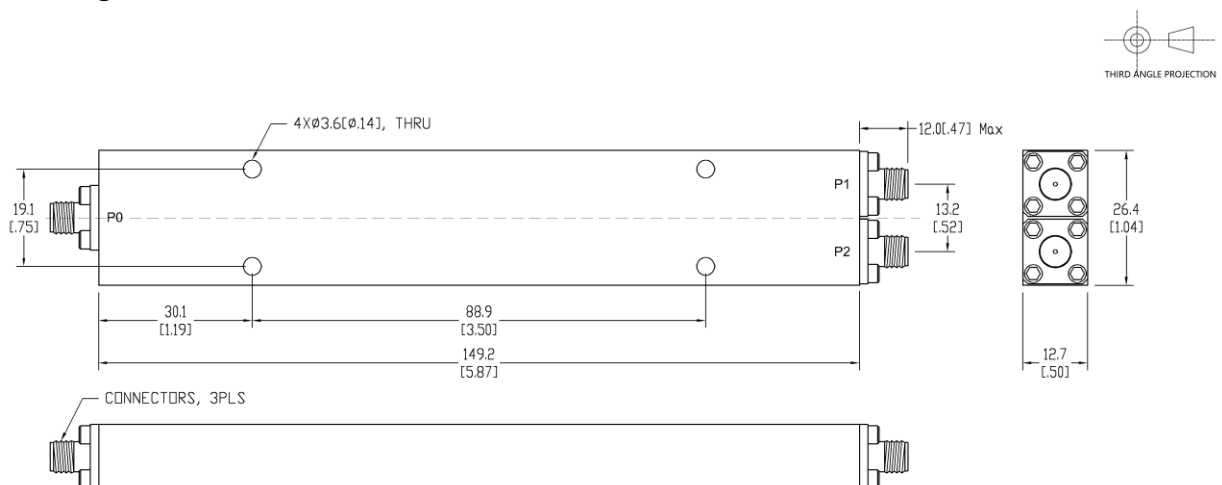
All specifications are subject to change without notice at any time

Frequency Range	GHz	DC-0.5	0.5-18	18-26.5
Sum VSWR	:1 (Typ./Max.)	1.7/-	1.2/1.5	1.2/1.5
Distri. VSWR	:1 (Typ./Max.)	1.7/-	1.2/1.5	1.2/1.5
Insertion Loss	dB(Typ./Max.)	0.6/1.2	1.2/1.7	1.6/2.4
Amp. Unbalance	dB(Typ./Max.)	±0.1/±0.3	±0.2/±0.3	±0.3/±0.4
Phase Unbalance	Deg. (Typ./Max.)	±1/±3	±2/±3	±3/±4
Isolation	dB (Typ./Min.)	8/-	22/17	22/18
Power ²	W(Max.)	CW: 30; Peak: 3000		
Weight	g(Max.)	150	Dimension ³ mm	149.2x26.4x12.7
Interface	Sum: SMA [F], Distri.: SMA [F]; Stainless steel connector, Per IEC 61169			
Finishing	Alloy iridite, Per MIL-DTL-5541F			
Temperature	Operating: -55--+85°C; Storage: -55--+100°C			
Environmental	Optional: Per MIL-STD-202F (contact supplier for detail info.)			
Eng. Customized	N/A			

Note:

1. Above Theoretical Loss 3dB
2. VSWR ≤ 1.2 required for CW
3. Unless otherwise specified, Decimal tolerance: x.±1; .x±0.5; .xx±0.1

Outline Drawing



DC Start Power Divider

Model DP02-265 Rev.A

DC-26.5GHz 2-Way Power Divider, Coaxial connector

Typical Graph

@ Ambient Temperature

