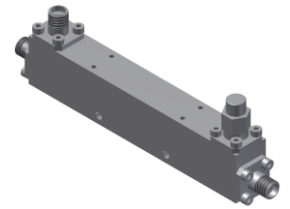


# DC Start Directional Coupler

## Model DC20-500 Rev.A

DC-50GHz 20dB Directional Coupler, Coaxial connector



Micable DC20-500 can work at DC-50GHz. It has very accurate coupling over 1-50GHz and repeated consistent coupling below 1GHz. It is ideal for test instrument, wideband signal sampling and power monitoring

### Specifications

All specifications are subject to change without notice at any time

Frequency Range	GHz	DC-0.4	0.4-1	1-26.5	26.5-50
Input VSWR	:1 (Typ./Max.)	1.1/1.3	1.1/1.3	1.3/1.6	1.4/1.8
Thru. VSWR	:1 (Typ./Max.)	1.1/1.3	1.1/1.3	1.3/1.6	1.4/1.8
Coupling VSWR	:1 (Typ./Max.)	1.1/1.3	1.1/1.3	1.3/1.6	1.4/1.8
Insertion Loss	dB(Typ./Max.)	0.2/0.6	0.2/0.6	0.9/1.5	1.4/2.1
Coupling	dB(Typ./Max.)	35/-	22/-	20/20±2.2	20/20±2.2
Directivity	dB(Typ./Min.)	25/-	25/-	16/12	11/8

Power<sup>1</sup> W(Max.) CW: 20; Peak: 1000

Weight g(Max.) 75 Dimension<sup>2</sup> mm 88.9x12.7x17.8

Interface Main line: 2.4mm [F], Coup.: 2.4mm [F]; Stainless steel connector, Per IEC 61169

Finishing Nickel plating, Per QQ-N-290

Temperature Operating: -55--+85°C; Storage: -55--+100°C

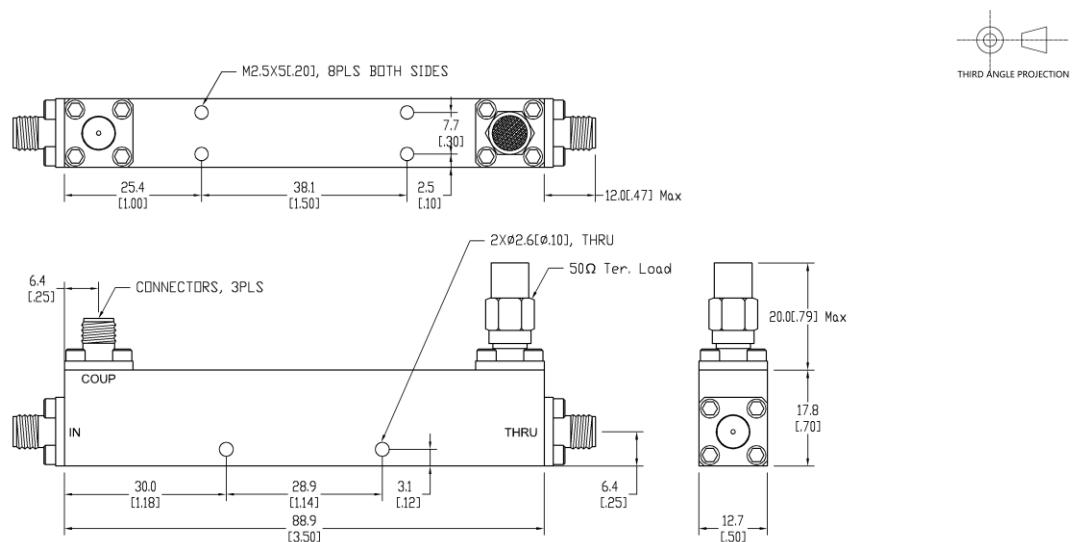
Environmental Optional: Per MIL-STD-202F (contact supplier for detail info.)

Eng. Customized N/A

Note: 1. VSWR ≤1.2 required for CW

2. Unless otherwise specified, Decimal tolerance: x±1; .x±0.5; .xx±0.1

### Outline Drawing



# DC Start Directional Coupler

## Model DC20-500 Rev.A

DC-50GHz 20dB Directional Coupler, Coaxial connector

### Typical Graph

@Ambient Temperature

