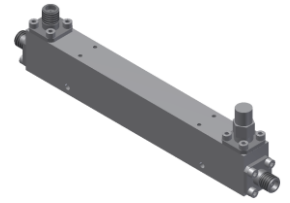


# DC Start Directional Coupler

## Model DC10-124 Rev.A

DC-12.4GHz 10dB High Directivity Directional Coupler

Micable DC10-124 can work at DC-12.4GHz. It has very accurate coupling over 0.5-12.4GHz and repeated consistent coupling below 0.5GHz. It is ideal for test instrument, wideband signal sampling and power monitoring



### Specifications

All specifications are subject to change without notice at any time

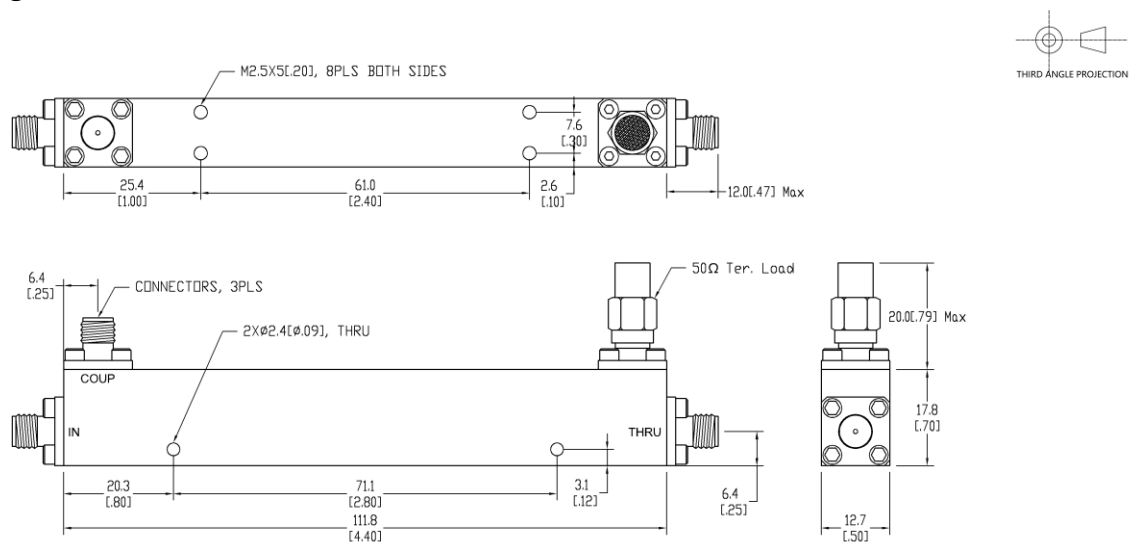
Frequency Range	GHz	DC-0.3	0.3-0.5	0.5-12.4
Input VSWR	:1 (Typ./Max.)	1.1/1.3	1.1/1.3	1.1/1.3
Thru. VSWR	:1 (Typ./Max.)	1.1/1.3	1.1/1.3	1.1/1.3
Coupling VSWR	:1 (Typ./Max.)	1.1/1.3	1.1/1.3	1.1/1.3
Insertion Loss	dB(Typ./Max.)	0.2/0.7	0.5/0.9	1/1.5
Coupling	dB(Typ./Max.)	25/-	12/-	10/10±1.3
Directivity	dB(Typ./Min.)	25/-	25/-	25/20
Power <sup>1</sup>	W(Max.)	CW: 30; Peak: 3000		
Weight	g(Max.)	90	Dimension <sup>2</sup>	mm 111.8x12.7x17.8
Interface	Main line: SMA [F], Coup.: SMA [F]; Stainless steel connector, Per IEC 61169			
Finishing	Nickel plating, Per QQ-N-290			
Temperature	Operating: -55--+85°C; Storage: -55--+100°C			
Environmental	Optional: Per MIL-STD-202F (contact supplier for detail info.)			
Eng. Customized	N/A			

Note:

1. VSWR ≤1.2 required for CW

2. Unless otherwise specified, Decimal tolerance: x±1; .x±0.5; .xx±0.1

### Outline Drawing



# DC Start Directional Coupler

## Model DC10-124 Rev.A

DC-12.4GHz 10dB High Directivity Directional Coupler

### Typical Graph

@Ambient Temperature

