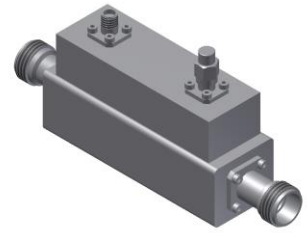


# High Power Directional Coupler

## Model D4012H020060 Rev.A

2-6GHz 40dB 600Watt Directional Coupler



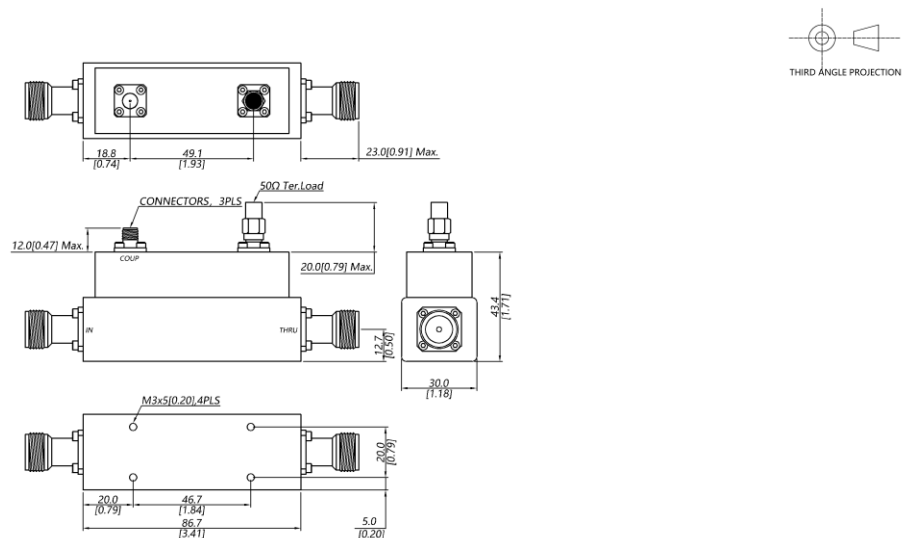
All specifications are subject to change without notice at any time

### Specifications

Frequency Range	GHz	2-6	
Main Line VSWR	:1 (Max.)	1.3	
Coupling VSWR	:1 (Max.)	1.3	
Insertion Loss <sup>1</sup>	dB(Max.)	0.4	
Coupling	dB(Max.)	40±0.7	
Flatness	dB(Max.)	±0.7	
Directivity	dB(Min.)	15	
Power <sup>2</sup>	W(Max.)	CW: 600; Peak: 3000	
Weight	g(Max.)	330	Dimension <sup>3</sup> mm (LxWxH) 86.7x30.0x43.4
Interface	Stainless steel connector; Input: TYPE N [F], Thru.: TYPE N [F], Coup.: SMA [F]		
Finishing	Nickel plating		
Temperature	Operating: -55~+85°C; Storage: -55~+100°C		
Environmental	Per MIL-STD-202F, Method 107D, 204D, 213B (optional, contact supplier for detail info.)		
Eng. Customized	N/A		

- Note:
1. Theoretical coupling loss included
  2. VSWR ≤ 1.2 required for CW
  3. Unless otherwise specified, Decimal tolerance: x.±1; .x±0.5; .xx±0.1

### Outline Drawing



# High Power Directional Coupler

## Model D4012H020060 Rev.A

2-6GHz 40dB 600Watt Directional Coupler

### Typical Graph

Typical test temperature @25°C

