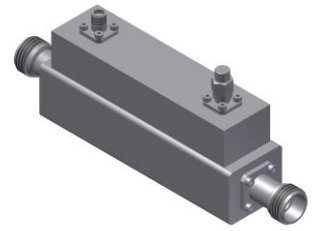


High Power Directional Coupler

Model D4012H010060 Rev.A

1-6GHz 40dB 600Watt Directional Coupler



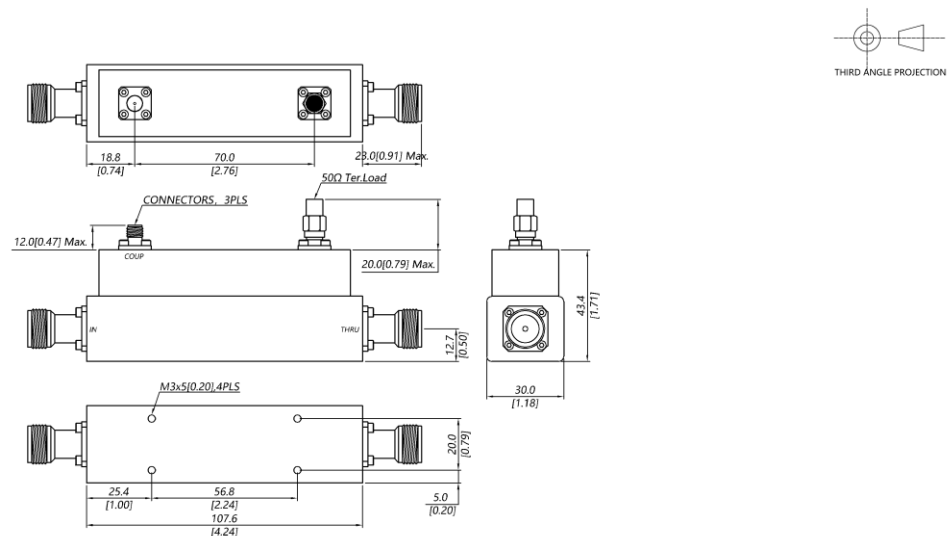
Specifications

All specifications are subject to change without notice at any time

Frequency Range	GHz	1-6
Main Line VSWR	:1 (Max.)	1.3
Coupling VSWR	:1 (Max.)	1.3
Insertion Loss ¹	dB(Max.)	0.4
Coupling	dB(Max.)	40±0.7
Flatness	dB(Max.)	±0.9
Directivity	dB(Min.)	15
Power ²	W(Max.)	CW: 600; Peak: 3000
Weight	g(Max.)	420
Dimension ³	mm (LxWxH)	107.6x30.0x43.4
Interface	Stainless steel connector; Input: TYPE N [F], Thru.: TYPE N [F], Coup.: SMA [F]	
Finishing	Nickel plating	
Temperature	Operating: -55~+85°C; Storage: -55~+100°C	
Environmental	Per MIL-STD-202F, Method 107D, 204D, 213B (optional, contact supplier for detail info.)	
Eng. Customized	N/A	

- Note:
- Theoretical coupling loss included
 - VSWR ≤ 1.2 required for CW
 - Unless otherwise specified, Decimal tolerance: x.±1; .x±0.5; .xx±0.1

Outline Drawing



High Power Directional Coupler

Model D4012H010060 Rev.A

1-6GHz 40dB 600Watt Directional Coupler

Typical Graph

Typical test temperature @25°C

