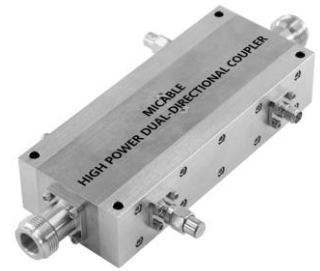


High Power Dual-Directional Coupler

Model D4008HB010060 Rev.A

1-6GHz 40dB 400Watt Dual-Directional Coupler, Coaxial connector



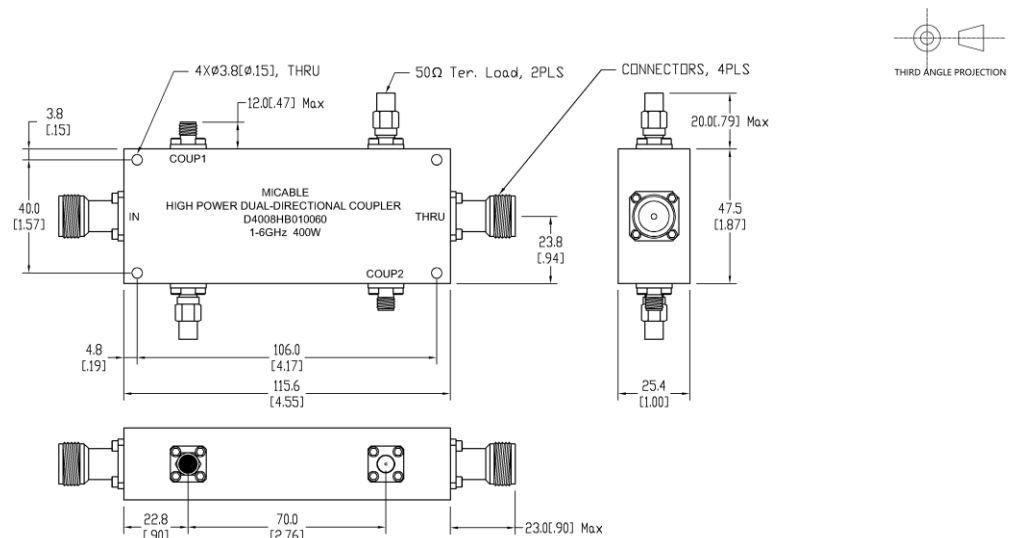
All specifications are subject to change without notice at any time

Specifications

| | | |
|-----------------------------|---|---------------------|
| Frequency Range | GHz | 1-6 |
| Main Line VSWR | :1 (Max.) | 1.3 |
| Coupling VSWR | :1 (Max.) | 1.3 |
| Insertion Loss ¹ | dB(Max.) | 0.4 |
| Coupling | dB(Max.) | 40±0.7 |
| Flatness | dB(Max.) | ±1.1 |
| Directivity | dB(Min.) | 15 |
| Power ² | W(Max.) | CW: 400; Peak: 3000 |
| Weight | g(Max.) | 440 |
| Dimension ³ | mm (LxWxH) | 115.6x25.4x47.5 |
| Interface | Main line: TYPE N [F], Coup.: SMA [F]; Stainless steel connector, Per IEC 61169 | |
| Finishing | Nickel plating, Per QQ-N-290 | |
| Temperature | Operating: -55~+85°C; Storage: -55~+100°C | |
| Environmental | Optional: Per MIL-STD-202F (contact supplier for detail info.) | |
| Eng. Customized | N/A | |

- Note:
1. Theoretical coupling loss included
 2. VSWR ≤ 1.2 required for CW
 3. Unless otherwise specified, Decimal tolerance: x.±1; .x±0.5; .xx±0.1

Outline Drawing



High Power Dual-Directional Coupler

Model D4008HB010060 Rev.A

1-6GHz 40dB 400Watt Dual-Directional Coupler, Coaxial connector

Typical Graph

Typical test environment: 25°C and 60%RH

