

# High Power Dual-Directional Coupler

## Model D4008HB005180 Rev.A

0.5-18GHz 40dB 400Watt Dual-Directional Coupler, Coaxial connecto



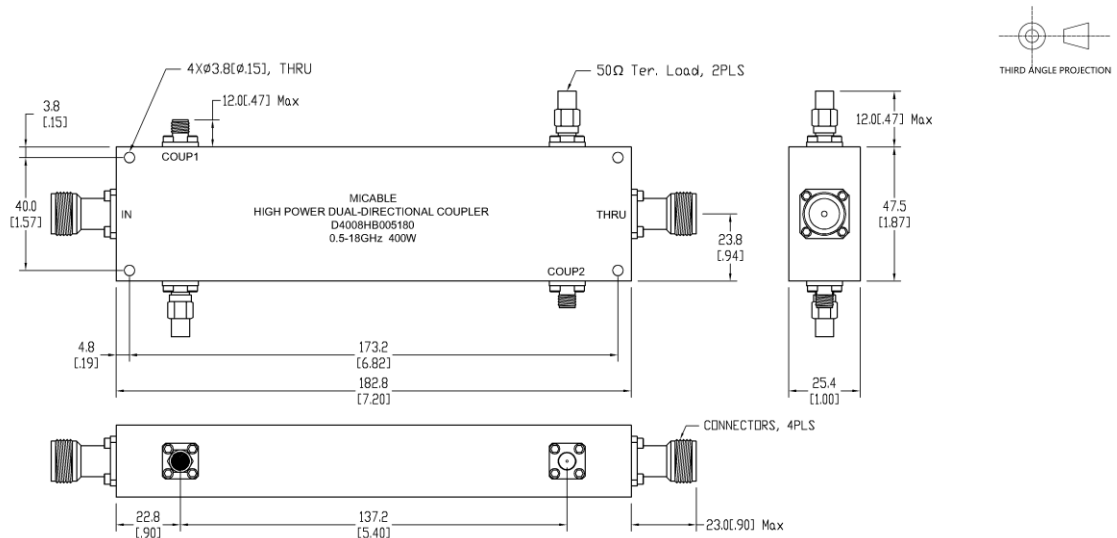
### Specifications

All specifications are subject to change without notice at any time

Frequency Range	GHz	0.5-8	8-18
Main Line VSWR	:1 (Max.)	1.4	1.5
Coupling VSWR	:1 (Max.)	1.5	1.6
Insertion Loss <sup>1</sup>	dB(Max.)	0.7	1
Coupling	dB(Max.)	40±1.2	40±1.2
Flatness	dB(Max.)	±1.7	±1.7
Directivity	dB(Min.)	12	10
Power <sup>2</sup>	W(Max.)	CW: 400; Peak: 3000	
Weight	g(Max.)	660	Dimension <sup>3</sup> mm (LxWxH) 182.8x25.4x47.5
Interface	Main line: TYPE N [F], Coup.: SMA [F]; Stainless steel connector, Per IEC 61169		
Finishing	Nickel plating, Per QQ-N-290		
Temperature	Operating: -55~+85°C; Storage: -55~+100°C		
Environmental	Optional: Per MIL-STD-202F (contact supplier for detail info.)		
Eng. Customized	N/A		

- Note:
1. Theoretical coupling loss included
  2. VSWR ≤ 1.2 required for CW
  3. Unless otherwise specified, Decimal tolerance: x.±1; .x±0.5; .xx±0.1

### Outline Drawing



# High Power Dual-Directional Coupler

## Model D4008HB005180 Rev.A

0.5-18GHz 40dB 400Watt Dual-Directional Coupler, Coaxial connecto

### Typical Graph

Typical test environment: 25°C and 60%RH

