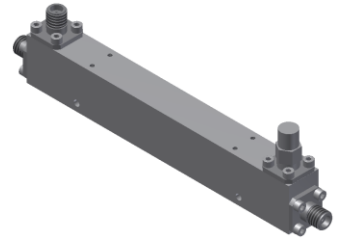


Directional Coupler

Model D30N005400 Rev.A

0.5-40GHz 30dB Directional Coupler, Coaxial connector



Specifications

All specifications are subject to change without notice at any time

Frequency Range	GHz	0.5-18	18-26.5	26.5-40
Main Line VSWR	:1 (Max.)	1.5	1.6	1.7
Coupling VSWR	:1 (Max.)	1.5	1.6	1.7
Insertion Loss ¹	dB(Max.)	1.5	2	2.6
Coupling	dB(Max.)	30±1.2	30±1.2	30±1.2
Flatness	dB(Max.)	±1.5	±1.5	±1.5
Directivity	dB(Min.)	14	12	10
Power ²	W(Max.)	CW: 20; Peak: 3000		
Weight	g(Max.)	90	Dimension ³ mm (LxWxH)	111.8x12.7x17.8
Interface	Stainless steel connector; Input: 2.92mm [F], Thru.: 2.92mm [F], Coup.: 2.92mm [F]			
Finishing	Nickel plating			
Temperature	Operating: -55~+85°C; Storage: -55~+100°C			
Environmental	Per MIL-STD-202F, Method 107D, 204D, 213B (optional, contact supplier for detail info.)			
Eng. Customized	N/A			

- Note:
1. Theoretical coupling loss included
 2. VSWR ≤ 1.2 required for CW
 3. Unless otherwise specified, Decimal tolerance: x.±1; .x±0.5; .xx±0.1

Outline Drawing

