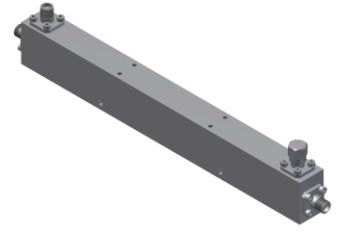


Directional Coupler

Model D30N003180 Rev.A

0.3-18GHz 30dB Directional Coupler, Coaxial connector



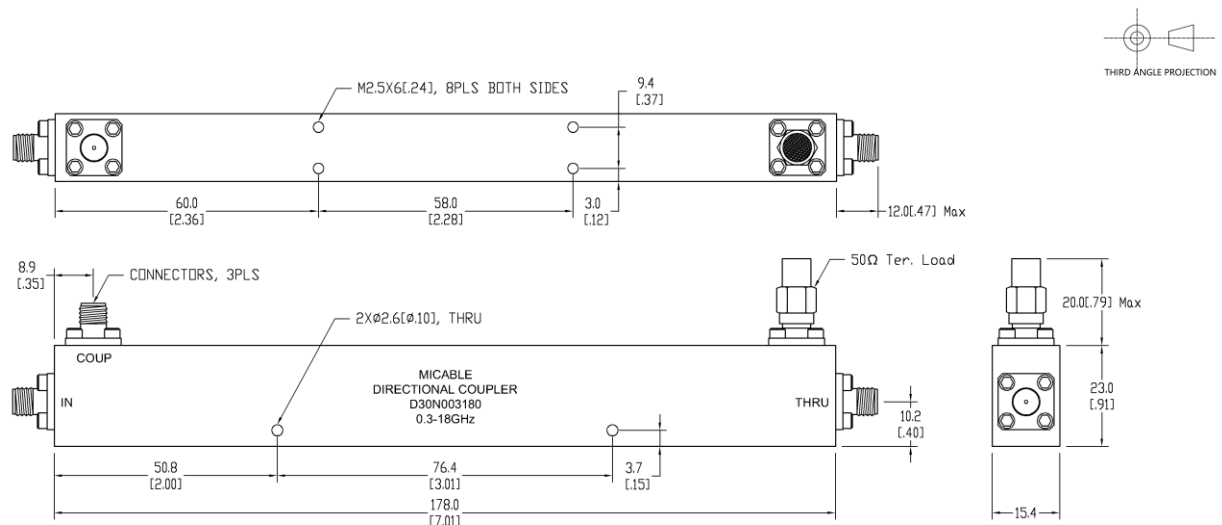
Specifications

All specifications are subject to change without notice at any time

Frequency Range	GHz	0.3-8	8-18
Main Line VSWR	:1 (Max.)	1.3	1.4
Coupling VSWR	:1 (Max.)	1.3	1.4
Insertion Loss ¹	dB(Max.)	1.2	1.6
Coupling	dB(Max.)	30±0.9	30±0.9
Flatness	dB(Max.)	±1.2	±1.2
Directivity	dB(Min.)	15	13
Power ²	W(Max.)	CW: 30; Peak: 3000	
Weight	g(Max.)	190	Dimension ³ mm (LxWxH) 178.0x15.4x23.0
Interface	Main line: SMA [F], Coup.: SMA [F]; Stainless steel connector, Per IEC 61169		
Finishing	Nickel plating, Per QQ-N-290		
Temperature	Operating: -55~+85°C; Storage: -55~+100°C		
Environmental	Optional: Per MIL-STD-202F (contact supplier for detail info.)		
Eng. Customized	N/A		

- Note:
1. Theoretical coupling loss included
 2. VSWR ≤ 1.2 required for CW
 3. Unless otherwise specified, Decimal tolerance: x.±1; .x±0.5; .xx±0.1

Outline Drawing



Directional Coupler

Model D30N003180 Rev.A

0.3-18GHz 30dB Directional Coupler, Coaxial connector

Typical Graph

@Ambient Temperature

