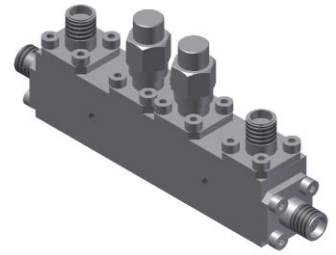


Dual-Directional Coupler

Model D30B060670 Rev.A

6-67GHz 30dB Dual-Directional Coupler, Coaxial connector



Specifications

All specifications are subject to change without notice at any time

| | | | | | |
|-----------------------------|---|--------------------|-----------------------------------|----------------|--------|
| Frequency Range | GHz | 6-18 | 18-40 | 40-50 | 50-67 |
| Main Line VSWR | :1 (Max.) | 1.7 | 1.8 | 1.9 | 2 |
| Coupling VSWR | :1 (Max.) | 1.7 | 1.8 | 1.9 | 2 |
| Insertion Loss ¹ | dB(Max.) | 1.5 | 2.2 | 2.5 | 3 |
| Coupling | dB(Max.) | 30±1.2 | 30±1.2 | 30±1.2 | 30±1.2 |
| Flatness | dB(Max.) | ±1.3 | ±1.3 | ±1.3 | ±1.3 |
| Directivity | dB(Min.) | 14 | 10 | 8 | 7 |
| Power ² | W(Max.) | CW: 12; Peak: 1000 | | | |
| Weight | g(Max.) | 70 | Dimension ³ mm (LxWxH) | 63.5x12.7x15.9 | |
| Interface | Stainless steel connector; Input: 1.85mm [F], Thru.: 1.85mm [F], Coup.: 1.85mm [F] | | | | |
| Finishing | Nickel plating | | | | |
| Temperature | Operating: -55~+85°C; Storage: -55~+100°C | | | | |
| Environmental | Per MIL-STD-202F, Method 107D, 204D, 213B (optional, contact supplier for detail info.) | | | | |
| Eng. Customized | N/A | | | | |

- Note:
1. Theoretical coupling loss included
 2. VSWR ≤ 1.2 required for CW
 3. Unless otherwise specified, Decimal tolerance: x.±1; .x±0.5; .xx±0.1

Outline Drawing

