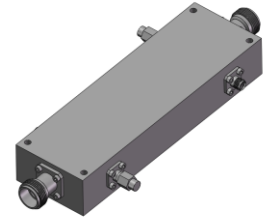


High Power Dual-Directional Coupler

Model D3008HB007180 Rev.A

0.7-18GHz 30dB 400Watt Dual-Directional Coupler



All specifications are subject to change without notice at any time

Specifications

Frequency Range	GHz	0.7-8	8-18
Main Line VSWR	:1 (Max.)	1.4	1.5
Coupling VSWR	:1 (Max.)	1.5	1.6
Insertion Loss ¹	dB(Max.)	0.6	0.9
Coupling	dB(Max.)	30±1.2	30±1.2
Flatness	dB(Max.)	±1.4	±1.4
Directivity	dB(Min.)	12	10
Power ²	W(Max.)	CW: 400; Peak: 3000	
Weight	g(Max.)	TBD	Dimension ³ mm (LxWxH) 152.3x25.4x47.5
Interface	Stainless steel connector; Input: TYPE N [F], Thru.: TYPE N [F], Coup.: SMA [F]		
Finishing	Nickel plating		
Temperature	Operating: -55~+85°C; Storage: -55~+100°C		
Environmental	Per MIL-STD-202F, Method 107D, 204D, 213B (optional, contact supplier for detail info.)		
Eng. Customized	N/A		

- Note:
1. Theoretical coupling loss included
 2. VSWR ≤ 1.2 required for CW
 3. Unless otherwise specified, Decimal tolerance: x.±1; .x±0.5; .xx±0.1

Outline Drawing

