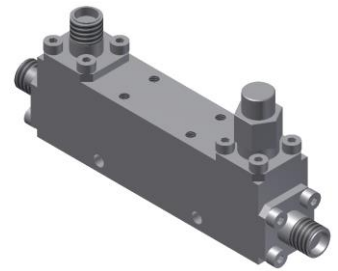


Directional Coupler

Model D20N020400 Rev.A

2-40GHz 20dB Directional Coupler, Coaxial connector



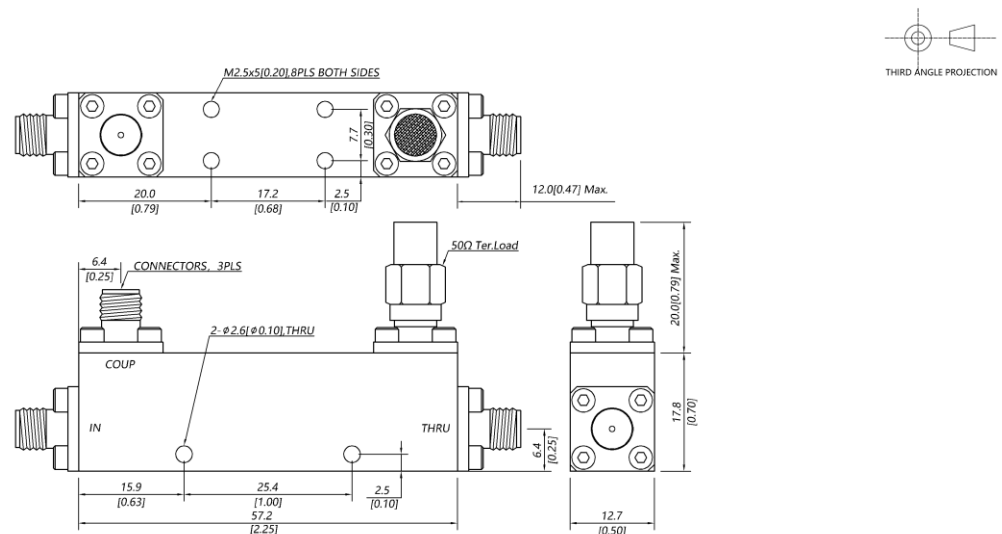
Specifications

All specifications are subject to change without notice at any time

| | | | | |
|-----------------------------|---|--------------------|-----------------------------------|----------------|
| Frequency Range | GHz | 2-18 | 18-26.5 | 26.5-40 |
| Main Line VSWR | :1 (Max.) | 1.5 | 1.6 | 1.7 |
| Coupling VSWR | :1 (Max.) | 1.5 | 1.6 | 1.7 |
| Insertion Loss ¹ | dB(Max.) | 0.9 | 1.2 | 1.5 |
| Coupling | dB(Max.) | 20±0.7 | 20±0.7 | 20±0.7 |
| Flatness | dB(Max.) | ±0.9 | ±0.9 | ±0.9 |
| Directivity | dB(Min.) | 13 | 11 | 10 |
| Power ² | W(Max.) | CW: 20; Peak: 3000 | | |
| Weight | g(Max.) | 55 | Dimension ³ mm (LxWxH) | 57.2x12.7x17.8 |
| Interface | Stainless steel connector; Input: 2.92mm [F], Thru.: 2.92mm [F], Coup.: 2.92mm [F] | | | |
| Finishing | Nickel plating | | | |
| Temperature | Operating: -55~+85°C; Storage: -55~+100°C | | | |
| Environmental | Per MIL-STD-202F, Method 107D, 204D, 213B (optional, contact supplier for detail info.) | | | |
| Eng. Customized | N/A | | | |

- Note:
1. Theoretical coupling loss included
 2. VSWR ≤ 1.2 required for CW
 3. Unless otherwise specified, Decimal tolerance: x.±1; .x±0.5; .xx±0.1

Outline Drawing



Directional Coupler

Model D20N020400 Rev.A

2-40GHz 20dB Directional Coupler, Coaxial connector

Typical Graph

Typical test temperature @25°C

