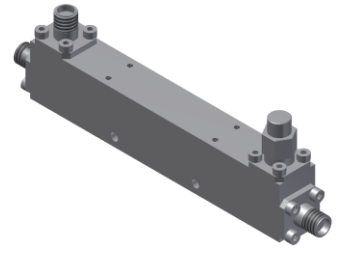


Directional Coupler

Model D20N010400 Rev.B

1-40GHz 20dB Directional Coupler, Coaxial connector



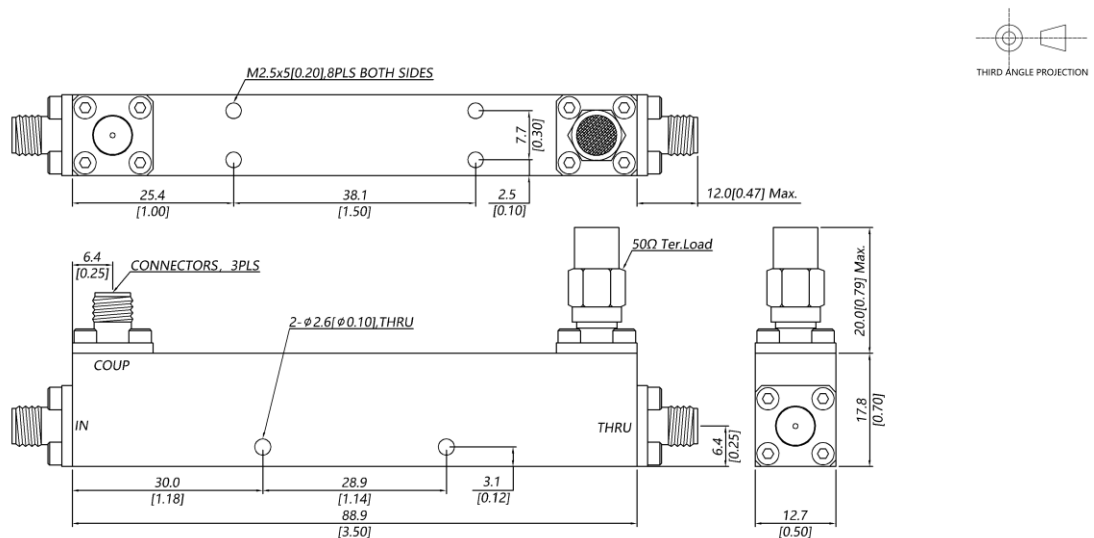
Specifications

All specifications are subject to change without notice at any time

Frequency Range	GHz	1-18	18-26.5	26.5-40
Main Line VSWR	:1 (Max.)	1.5	1.6	1.7
Coupling VSWR	:1 (Max.)	1.5	1.6	1.7
Insertion Loss ¹	dB(Max.)	1.3	1.5	1.9
Coupling	dB(Max.)	20±0.7	20±0.7	20±0.7
Flatness	dB(Max.)	±1	±1	±1
Directivity	dB(Min.)	13	11	10
Power ²	W(Max.)	CW: 20; Peak: 3000		
Weight	g(Max.)	75	Dimension ³ mm (LxWxH)	88.9x12.7x17.8
Interface	Stainless steel connector; Input: 2.92mm [F], Thru.: 2.92mm [F], Coup.: 2.92mm [F]			
Finishing	Nickel plating			
Temperature	Operating: -55~+85°C; Storage: -55~+100°C			
Environmental	Per MIL-STD-202F, Method 107D, 204D, 213B (optional, contact supplier for detail info.)			
Eng. Customized	N/A			

- Note:
1. Theoretical coupling loss included
 2. VSWR ≤ 1.2 required for CW
 3. Unless otherwise specified, Decimal tolerance: x.±1; .x±0.5; .xx±0.1

Outline Drawing



Directional Coupler

Model D20N010400 Rev.B

1-40GHz 20dB Directional Coupler, Coaxial connector

Typical Graph

Typical test temperature @25°C

