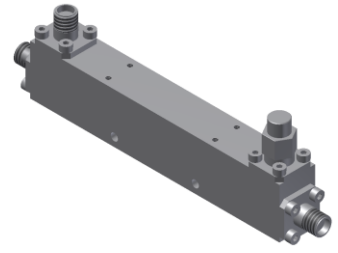


# Directional Coupler

## Model D20N010265 Rev.B

1-26.5GHz 20dB Directional Coupler, Coaxial connector



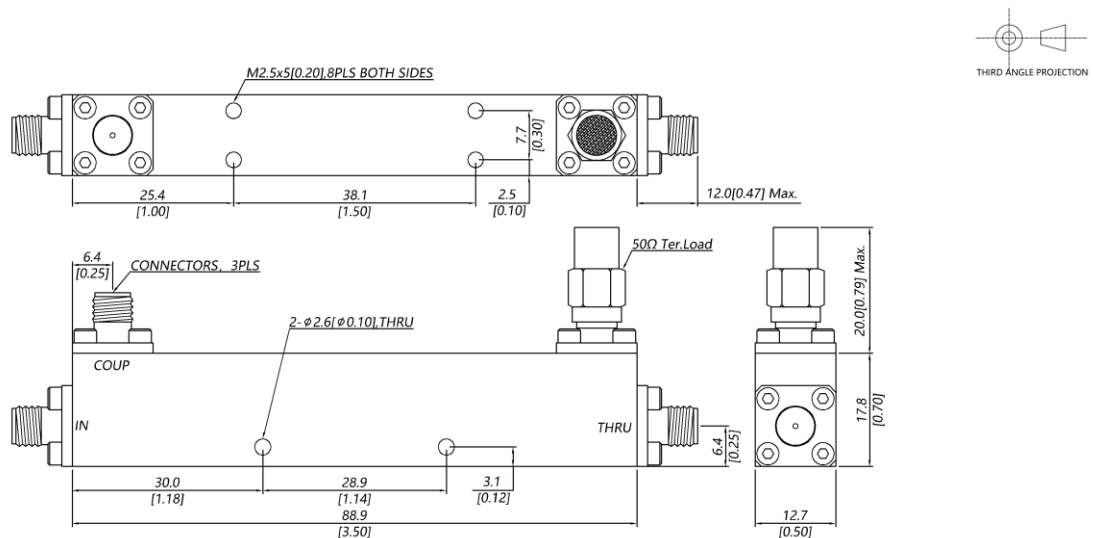
### Specifications

All specifications are subject to change without notice at any time

|                             |   |                    |                                   |                |
|-----------------------------|---|--------------------|-----------------------------------|----------------|
| Frequency Range             | GHz   | 1-8                | 8-18                              | 18-26.5        |
| Main Line VSWR              | :1 (Max.)   | 1.3                | 1.4                               | 1.5            |
| Coupling VSWR               | :1 (Max.)   | 1.3                | 1.4                               | 1.5            |
| Insertion Loss <sup>1</sup> | dB(Max.)  | 0.7                | 1                                 | 1.2            |
| Coupling                    | dB(Max.)  | 20±0.7             | 20±0.7                            | 20±0.7         |
| Flatness                    | dB(Max.)  | ±0.7               | ±0.7                              | ±0.7           |
| Directivity                 | dB(Min.)  | 17                 | 15                                | 14             |
| Power <sup>2</sup>          | W(Max.)   | CW: 30; Peak: 3000 |                                   |                |
| Weight                      | g(Max.)   | 75                 | Dimension <sup>3</sup> mm (LxWxH) | 88.9x12.7x17.8 |
| Interface                   | Stainless steel connector; Input: SMA [F], Thru.: SMA [F], Coup.: SMA [F]               |                    |                                   |                |
| Finishing                   | Nickel plating  |                    |                                   |                |
| Temperature                 | Operating: -55~+85°C; Storage: -55~+100°C   |                    |                                   |                |
| Environmental               | Per MIL-STD-202F, Method 107D, 204D, 213B (optional, contact supplier for detail info.) |                    |                                   |                |
| Eng. Customized             | N/A   |                    |                                   |                |

- Note:
1. Theoretical coupling loss included
  2. VSWR ≤ 1.2 required for CW
  3. Unless otherwise specified, Decimal tolerance: x.±1; .x±0.5; .xx±0.1

### Outline Drawing



# Directional Coupler

## Model D20N010265 Rev.B

1-26.5GHz 20dB Directional Coupler, Coaxial connector

### Typical Graph

Typical test temperature @25°C

